

PORTABLE STATIC PRESSURE HYDRAULIC TEST CART

**992
Series**



Model 07-992-05

Standard Features:

- Incorporates Air Over Oil Intensifier Hydraulic Pump
- Operates Off Shop Air (100 PSI)
- Will Hold Steady Pressure Indefinitely
- Complete Pressure and Flow Adjustment
- Durable Laser Engraved, Aluminum Placards
- Panel Mounted Operational Instructions
- Precision Air Regulator for Precise Pressure Control
- Fine Adjustment Needle Valve for Exact Flow Control
- Pressure Release Valve
- Heavy Duty, All Welded .090 Aluminum Construction
- 3 Gallon Stainless Reservoir
- Easy Maneuverability with Heavy Duty 8" Wheels
- Pressure and Return Ports (#4 Size)
- Durable Laser Engraved Aluminum Placards
- Large Capacity Return Filter (3 Micron Absolute)
- 4" Test Quality Pressure Gauge
- Current Pressure Gauge Certificate of Calibration

Dimensions: Height 45 in, Width 15 in, Depth 30 in

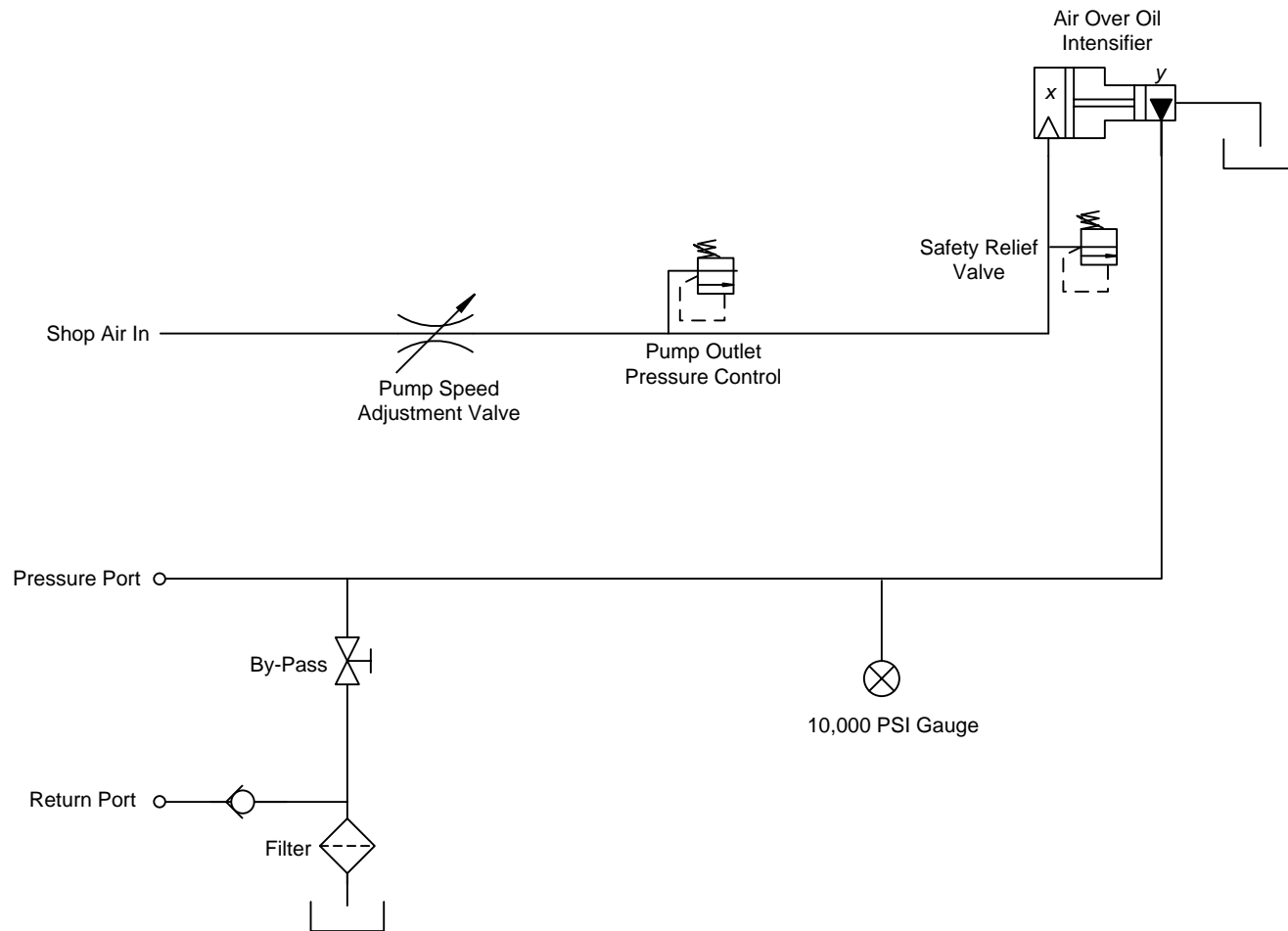
SPECIFICATIONS:

SERIES MODEL	MAXIMUM PUMP PRESSURE PSI (bar)	PUMP FLOW GPM (lpm)	MAXIMUM SHOP AIR PRESSURE PSI (lpm)	SHOP AIR SUPPLY FLOW CFM (ccm/min.)
07-992-**	0 - 10,000 PSI 0 - 680 bar	1.5 GPM 5.6 lpm	100 PSI 7 bar	5 CFM 39 ccm/min.
07-994-**	0 - 5,000 PSI 0 - 340 bar	3.0 GPM 11 lpm	100 PSI 7 bar	5 CFM 39 ccm/min.

**Model by Fluid Type: Mil-H-5606 = 02 Mil-H-83282 = 03 Skydrol = 05



9283 Industrial Blvd. Leland, NC 28451 USA
Voice 910.371.1151 Fax 910.371.1152
ap-hydraulics.com



Series 992 Static Pressure Hydraulic Test Cart Schematic

