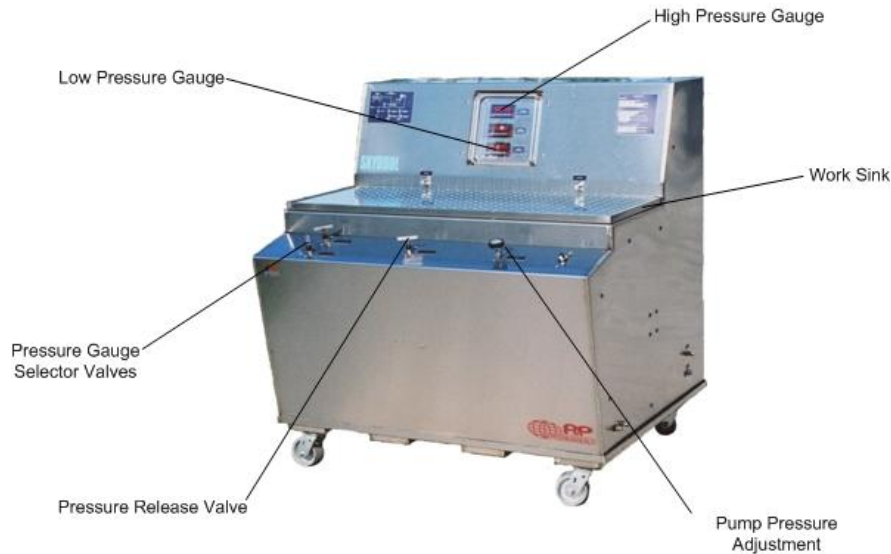


STATIC PRESSURE BRAKE HYDRAULIC TEST STAND

**991
Series**

**2 Year
Warranty**

Engineered Specifically for Testing Brake Assemblies After Overhaul



Model 07-991-05

Shown with Optional Digital Gauges

Standard Features:

- Convenient "Hands Free" Operation
Foot Control for Pump Output Pressure
- Air Over Oil Intensifier Pump
- Operates Off Shop Air (100 PSI - 5 CFM)
- High or Low Pressure System Selector Valve
- High Pressure Range Dedicated System
- Precise High Pressure Adjustment
(5,000 PSI or 10,000 PSI)
- Low Pressure Range Dedicated System
- Precise Low Pressure Adjustment (0 – 200 PSI)
- All Welded, .009 Brushed Aluminum Cabinet
- Easy Maneuvering Ensured by Two
Fixed and Two Swivel Castors with Stability
Provided by the Heavy Duty Floor Lock
- Large Capacity Return Filter (3 Micron Absolute)
- Work Sink with Drain (18" x 42")
- Stainless Steel Reservoir (5 Gallons)
- Inlet Shop Air, Dryer & Lubricate
- High Pressure Port
- Low Pressure Port
- Return Port
- Guaranteed No Leaks
Safety Pan Completely Covers Bottom
- Durable Laser Engraved, Aluminum Placards
- Panel Mounted Operational Instructions
- Easy Access Exterior Fluid Sampling
Valve to Meet Quality Parameters
- **Instrumentation**
- 2 each 4" Test Quality Pressure Gauge
(.25% Accuracy)
 - High Pressure
 - Low Pressure (0-200 PSI)
- Selector Valve for High or Low Pressure System
- Gauges Incorporate Adjustable Dial Indicator for
Easy Recalibration
- Current Pressure Gauge Certificate of Calibration

Dimensions: Length 42 in (106 cm), Width 22 in (56 cm), Height 48 in (122 cm), Weight: 250 lbs. (113 kg)

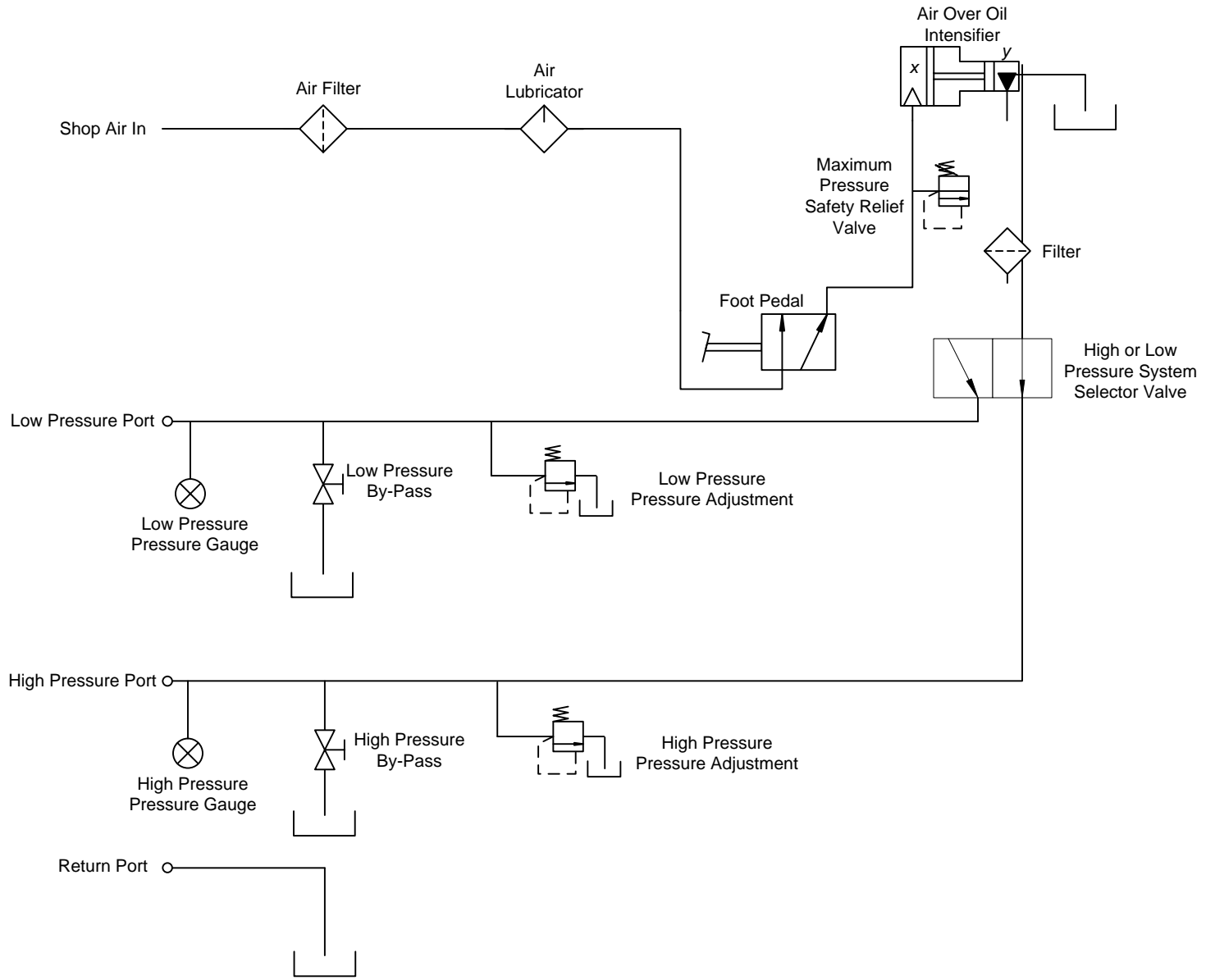
SPECIFICATIONS:

SERIES MODEL	PUMP PRESSURE PSI (bar)	PUMP FLOW GPM (lpm)	MAXIMUM SHOP AIR PRESSURE PSI (lpm)	SHOP AIR SUPPLY FLOW CFM (ccm/min.)
07-990-**	0 - 5,000 PSI 0 - 340 bar	2.0 GPM 7.6 lpm	100 PSI 7 bar	5 CFM 39 ccm/min.
07-991-**	0 - 10,000 PSI 0 - 680 bar	1.5 GPM 5.6 lpm	100 PSI 7 bar	5 CFM 39 ccm/min.

**Model by Fluid Type: Mil-H-5606 = 02 Mil-H-83282 = 03 Skydrol = 05



9283 Industrial Blvd. Leland, NC 28451 USA
Voice 910.371.1151 Fax 910.371.1152
ap-hydraulics.com



Series 991 Pneumatic Hydraulic Test Stand Schematic

Ordering Instructions

Step 1: Determine Size of the Hydraulic Test Stand Required, Refer to Aircraft's Component Overhaul Manuals For:

- A. Maximum (GPM) Gallons Per Minute
- B. Maximum (PSI) Pound Per Square Inch
- C. Testing Procedures and Operation of Components

Step 2: Refer to Aircraft's Component Overhaul Manuals for Type of Hydraulic Fluid.

Step 3: Determine the input voltage the Hydraulic Test Stand will be operated on. When ordering, the most common error is selecting incorrect input voltages 50 Hertz the flow will be reduced by 17%

Step 4: Call A&P Hydraulics experienced sales staff for any questions for explanation of the complete range of Hydraulic Test Stand Options that we offer.

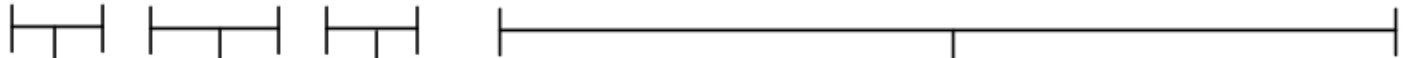
EXAMPLE:

Hydraulic Test Stand – Skydrol Fluid

Optional: CE Compliant

07 - 991 - 05 - XX - - - - - - - - - -

07 - - - - 0 - - - - - - - - - - - - - - - -



Hydraulic Test Stand

CHAR	GPM	LPM	PSI	BAR
990	2.0	7.6	5,000	340
991	1.5	5.6	10,000	680

CHAR	FLUID TYPE
2	Mil-H-5606
3	Mil-H-83282
5	Skydrol
6	Mil-PRF-87257

CHAR	OPTION DESCRIPTION
OO	Digital Pressure Gauge 0-200 PSI
PP	Digital Pressure Gauge 0-5000 PSI
QQ	Digital Pressure Gauge 0-10000 PSI
KK	Custom Engineering
WW	Second Language Operation Placards & Owner's Manual
XX	CE Compliant
TT	Digital Oil Temperature Gauge

