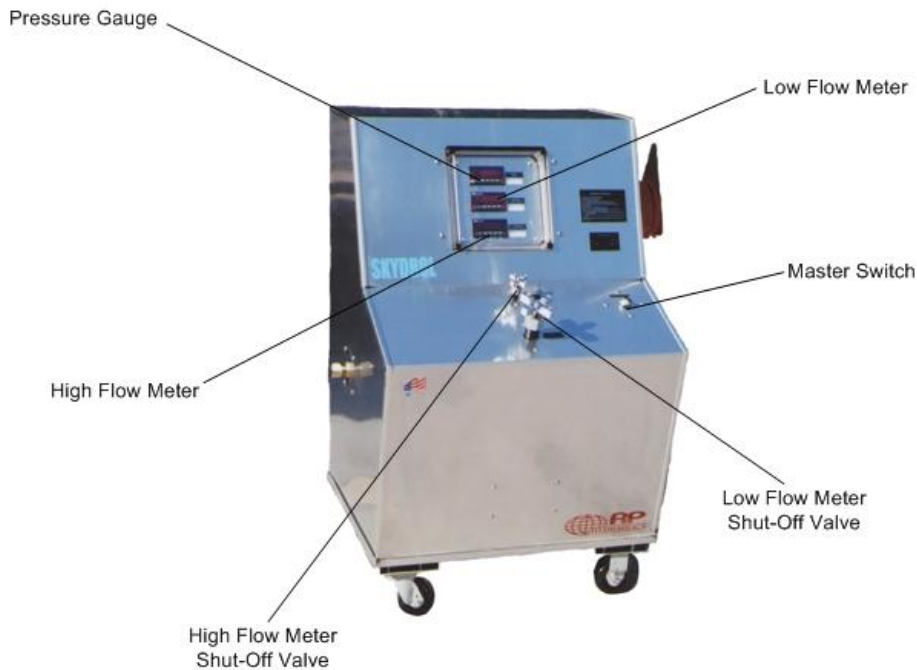


INTERNAL LEAKAGE TESTER (ITCAN)

**980
Series**

**2 Year
Warranty**

Designed to Internal Leakage Test of any System, Incorporates High and Low Digital Flow Meters for Exact Measurement of Flows



Model 07-981-05

STANDARD FEATURES:

- Simple to Use, Simply Place Tester Inline with Pressure Port of Aircraft and Hydraulic Power Unit
- High and Low Digital Flow Meters
- High Flow Meter (1% Accuracy)
- Low Flow Meter (1% Accuracy)
- Flow Meter .25% Repeatability Accuracy with Current Certificate of Calibration
- Other Flow Meter Ranges Available
- Pressure Gauge (0 - 6,000 PSI / .25% Accuracy)
- All Welded 0.90 Aluminum Construction
- Easy Access Exterior Fluid Sampling Valve to Meet Quality Parameters
- Easy Maneuvering Ensured by Two Fixed and Two Swivel 5" Castors with Stability Provided By the Heavy Duty Floor Lock
- Current Pressure Gauge and Flow Meter Certificate of Calibration
- Durable Aluminum, Laser Engraved Placards
- Panel Mounted Operational Instructions

OPTIONAL:

- Completely Portable 12V DC Battery Operated System Package
 1. Extra Capacity, Deep Cycle 12V DC Battery
 2. 12V DC Flow Meters
 3. 12V DC Pressure Gauge
 4. Automatic Battery Charger
 5. Maneuverability Provided by 8" Castors

Dimensions: Length 22" Width 24" Height 40" Weight: 150 lbs.

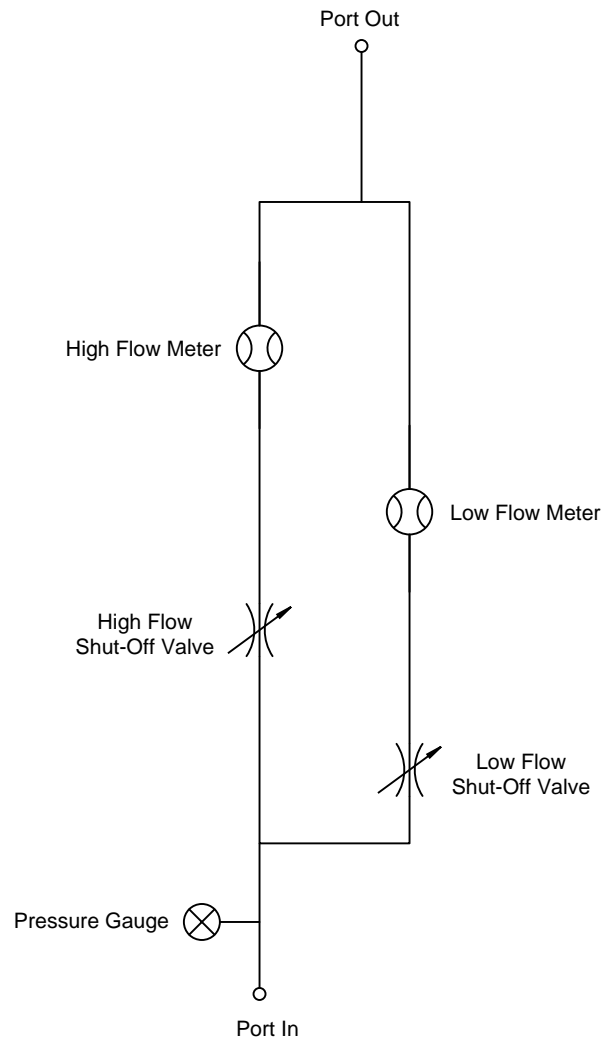
SPECIFICATIONS:

SERIES MODEL	MAXIMUM PRESSURE PSI (bar)	HIGH FLOW METER		LOW FLOW METER	
		GPM	(lpm)	GPM	(lpm)
07-981-**	0 - 5000 PSI	2 - 60 GPM		.20 - 2.0 GPM	
	0 - 340 bar	7 - 227 lpm		.75 - 7.5 lpm	
07-982-**	0 - 5000 PSI	4 - 85 GPM		0.5 - 5.0 GPM	
	0 - 340 bar	15 - 322 lpm		1.9 - 19 lpm	

**Model by Fluid Type: Mil-H-5606 = 02 Mil-H-83282 = 03 Skydrol = 05



9283 Industrial Blvd. Leland, NC 28451 USA
Voice 910.371.1151 Fax 910.371.1152
ap-hydraulics.com



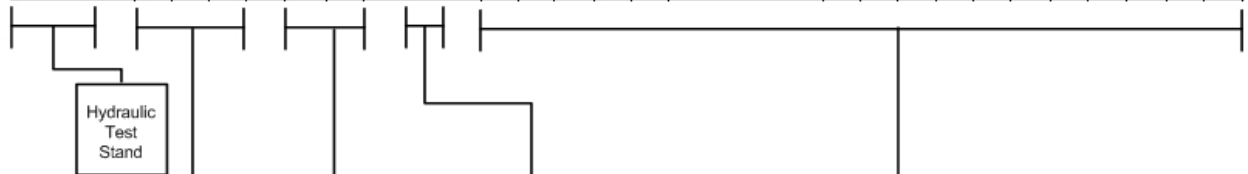
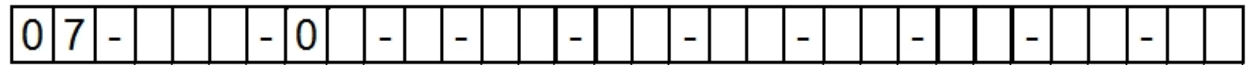
Series 980 Internal Leakage Tester Schematic

Ordering Instructions

- Step 1: Determine Size of the Hydraulic Test Stand Required, Refer to Aircraft's Component Overhaul Manuals For:
- A. Maximum (GPM) Gallons Per Minute
 - B. Maximum (PSI) Pound Per Square Inch
 - C. Testing Procedures and Operation of Components
- Step 2: Refer to Aircraft's Component Overhaul Manuals for Type of Hydraulic Fluid.
- Step 3: Determine the input voltage the Hydraulic Test Stand will be operated on. When ordering, the most common error is selecting incorrect input voltages 50 Hertz the flow will be reduced by 17%
- Step 4: Call A&P Hydraulics experienced sales staff for any questions for explanation of the complete range of Hydraulic Test Stand Options that we offer.

EXAMPLE:

Internal Leakage Tester – 5000 PSI – Low Flow 2 GPM – High Flow 60 GPM – Skydrol Fluid – 115-120 Volt AC 60 Hz Optional: CE Compliant



CHAR	GPM	LPM	PSI	BAR
981	2-60 / 0.20-2.0	7-227 / 15-322	5000	340
982	4-85 / 0.5-5.0	15-322 / 1.9-19	5000	340

CHAR	FLUID TYPE
2	Mil-H-5606
3	Mil-H-83282
5	Skydrol
6	Mil-PRF-87257

CHAR	VOLT/FREQ/PHASE
A	115 – 120 VOLT AC 60 Hz
C	12 Volt Portable Battery Package

CHAR	OPTION DESCRIPTION
BM	High Precision Digital Flow Meters (.25% Accuracy)
BN	Customer Specified Low Flow Range Flow Meter
BO	Customer Specified High Flow Range Flow Meter
KK	Custom Engineering
WW	Second Language Operation Placards & Owner's Manual
XX	CE Compliant

