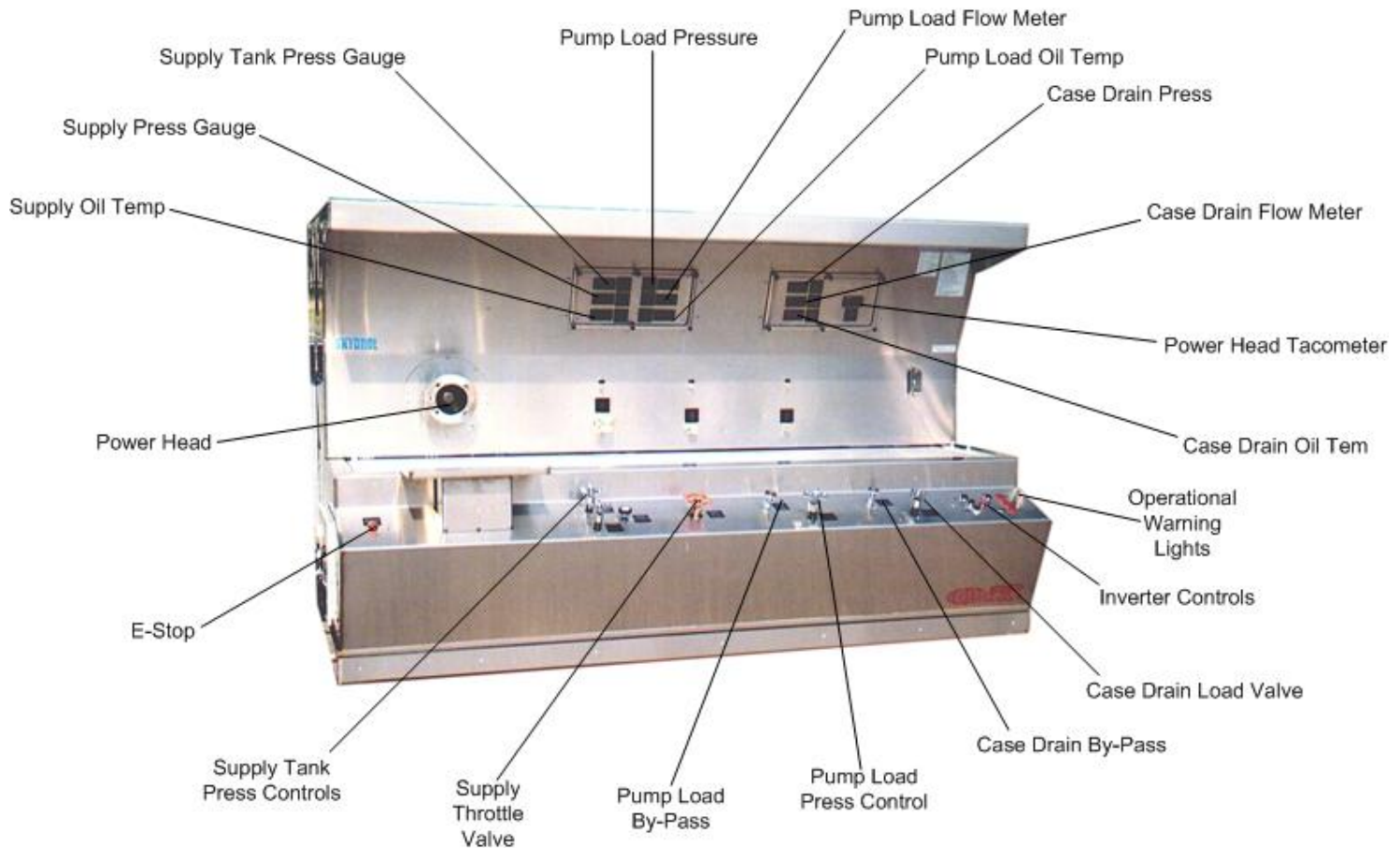


**960  
Series**

**2 Year  
Warranty**

# HYDRAULIC PUMP TEST STAND

*Heavy Duty, Variable Frequency Drive for Testing Pumps  
with the Most Demanding Applications*



Model 07-966-05

### *Features:*

*Precise Digital Invertor, RPM Control, All Digital Gauges,  
Stainless Steel Construction, and Kidney Loop Pump for Continuously  
Filtering and Cool of Hydraulic Fluid*



9283 Industrial Blvd. Leland, NC 28451 USA  
Voice 910.371.1151 Fax 910.371.1152  
ap-hydraulics.com

# HYDRAULIC PUMP TEST STAND

*Heavy Duty, Variable Frequency Drive for Testing Pumps  
with the Most Demanding Applications*

## STANDARD FEATURES AND SPECIFICATIONS FOR HYDRAULIC PUMP AND MOTOR TEST SYSTEM:

- **Supply Port**
  1. Digital Supply Pressure Gauge (.25% Accuracy)
  2. Supply Throttle
  3. Supply Pressure Adjustment (0-200 PSI)
  4. Digital Oil Temperature Gauge
  5. Automatic Supply Pressure Control
  6. Precise Supply Pressure Regulator
- **Pressure Port**
  1. Load Valve
  2. By-Pass Dump Valve
  3. Digital Pressure Gauge (.25% Accuracy - 0-5000 PSI)
  4. Digital Oil Temperature Gauge
  5. Digital High Pressure Flow Meter (1% Accuracy)
- **Case Drain Port**
  1. Load Valve
  2. By-Pass Dump Valve
  3. Digital Pressure Gauge (.25% Accuracy - 0-600 PSI)
  4. Digital Oil Temperature Gauge
  5. Digital Flow Meter (.4 - 7 GPM - 1% Accuracy)
  6. Case Drain Sump Tank  
Allows Pressure Adjustment from (0-200 PSI)
- **Super Clean Filtration – Industry Leading Filtration Ensures Quality While Increasing Aircraft Component Life**
  - Pump Outlet Filter
  - Supply Port Filter
  - Loop Pump Filter with LED Filter Condition Warning Indicator
  - Supply Tank Desiccant Filter
  - Sump Tank Filter
- **Instrumentation – All Gauges Feature Easy Programmability for Field Calibration**
  - **Two Digital Flow Meters (1% Accuracy)**
    1. Pump Flow Outlet (Refer Model Number for Flow Range)
    2. Case Drain Flow (.4 – 7 GPM)
  - **Four Digital Pressure Gauges (.25% Accuracy)**
    1. Supply Tank Pressure (0 - 200 PSI)
    2. Supply Port Pressure (0 - 200 PSI)
    3. Pump Outlet Pressure (0 – 5000 PSI)
    4. Case Drain Pressure (0 – 200 PSI)
- **Oil Temperature Control - Two Extra Capacity Oil Coolers to Ensure 100% Duty Cycle**
  1. Extra Capacity Pump Outlet Load Valve Oil Cooler
  2. Loop Pump Oil Cooler That Will Continuously Cool Fluid
- **Safety Features**
  1. Ergonomically Located Emergency Stop Switch
  2. Safety Over Pressure Relief Valve
  3. Safety Drip Pan Completely Covers Bottom to Ensure Clean Floors
  4. All Electrical Components Installed in NEMA 4, 12 Enclosure
  5. All Gauges are Fully Enclosed in NEMA 4. 12 Enclosure with a Clear Front Safety Glass Cover
  6. Operational LED Warning Indicator Lights
  7. Dual Heavy Duty Floor Locks to Ensure Stability
  8. Optional Safety Glass Sliding Doors for Work Sink
  9. Supply Tank Over Pressure Relief Valve

# HYDRAULIC PUMP TEST STAND

*Heavy Duty, Variable Frequency Drive for Testing Pumps  
with the Most Demanding Applications*

**PUMP TEST STAND STANDARD FEATURES:**

- The Pump Test Stand (PTS) is Designed for Testing All Fixed and Variable Displacement Pumps
- Precise Digital Pressure Gauges
- High Accuracy Digital Flow Meters
- Stainless Steel Pressure Supply Tank (175 Gallons)
- 5000 PSI Working Pressure
- All Gauges Enclosed in Skydrol Proof Enclosure
- Stainless Steel Construction
- Heavy Duty Work Sink with Grating
- Sink Drain Pump with Filter
- Loop Pump for Reservoir, Continuously Filters and Cools Fluid
- High Capacity Loop Pump Filter and Pump Outlet Filter
- LED Warning Indicators for Loop Filter, Supply Tank Low Level, and High Fluid Temperature
- Dual, Extra Capacity Water to Oil Coolers
- Automatic Oil Temp Control
- Guaranteed No Leaks, Safety Pan Completely Covers Bottom
- Current Pressure Gauge and Flow Meter Certificates of Calibration

**VARIABLE FREQUENCY DRIVE FEATURES:**

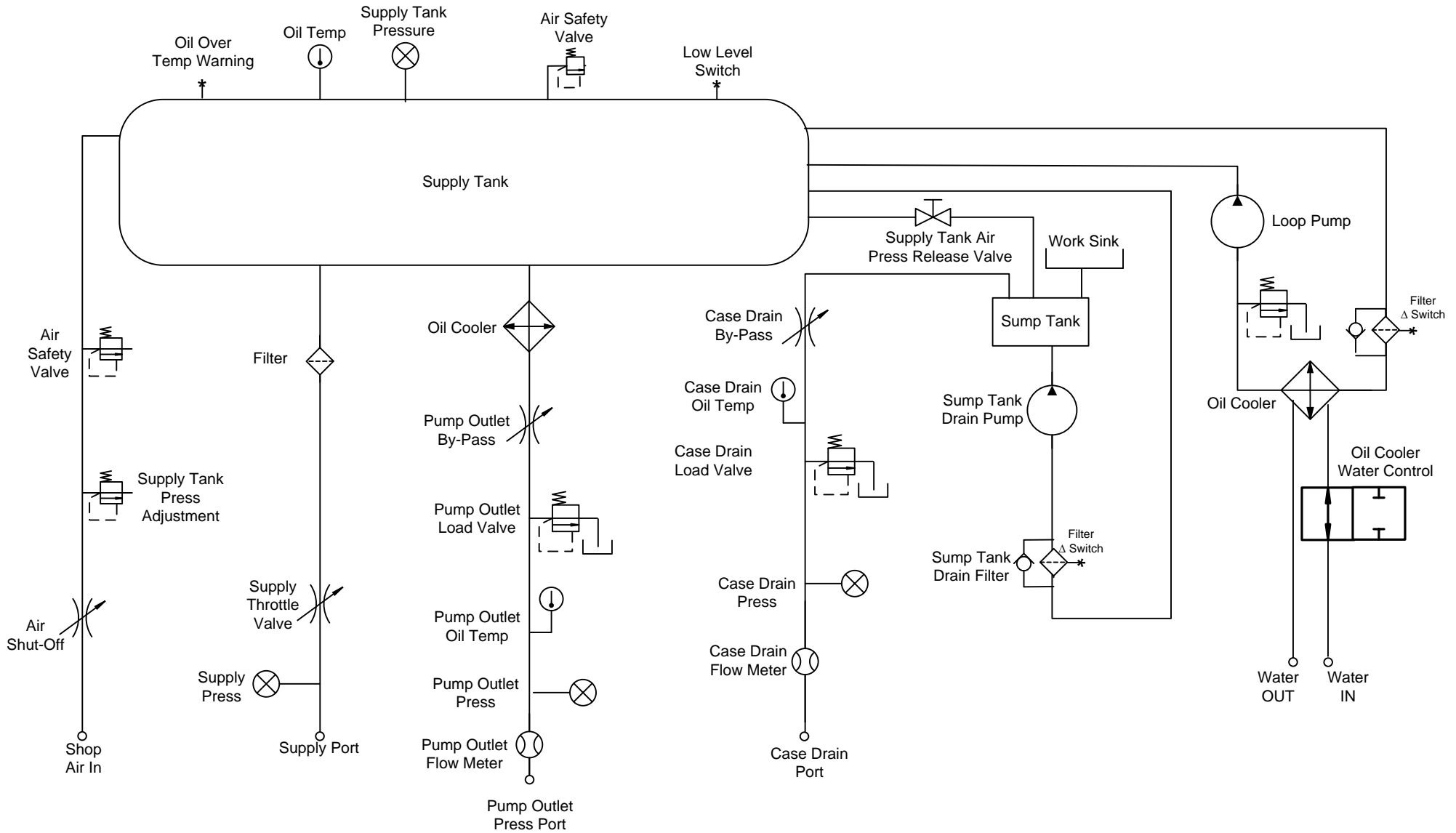
- Eaton® All Digital Variable Frequency
- Panel Mounted Controls
  1. Master Switch
  2. Emergency Stop Switch
  3. RPM Control Switch – High Resolution Potentiometer (0-6000 RPM Adjustable Speed) (10,000 RPM Available)
  4. Rotational Switch
- Digital Readouts
  1. Panel Mounted Tachometer RPM
  2. Motor Over Voltage
  3. Motor Over Current
  4. Motor Over Temperature
  5. Ground Fault
  6. Output Phase Supervision
  7. Encoder Fault

Dimensions: Length 114" Width 80" Height 77"

<b>SPECIFICATIONS:</b>					
SERIES MODEL	PUMP UNDER TEST OUTLET PRESSURE PSI (bar)	PUMP UNDER TEST OUTLET FLOW GPM (lpm)	INVERTER DRIVE MAXIMUM HP (kW)	SUPPLY TANK CAPACITY Gals (Lts)	WEIGHT Lbs. (kg)
07-962-**	0 - 5000 PSI 0 - 340 bar	25 GPM 95 lpm	60 HP 45 kW	125 Gals 473 lts	3150 lbs 1429 kg
07-964-**	0 - 5000 PSI 0 - 340 bar	50 GPM 189 lpm	100 HP 75 kW	125 Gals 473 lts	3550 lbs 1610 kg
07-966-**	0 - 5000 PSI 0 - 340 bar	65 GPM 246 lpm	150 HP 112 kW	150 Gals 568 lts	4100 lbs 1860 kg
07-968-**	0 - 5000 PSI 0 - 340 bar	85 GPM 322 lpm	200 HP 149 kW	175 Gals 662 lts	5700 lbs 2585 kg

\*\*Model by Fluid Type: Mil-H-5606 = 02 Mil-H-83282 = 03 Skydrol = 05





Series 960 Pump Test Stand Schematic

# Ordering Instructions

Step 1: Determine Size of the Hydraulic Test Stand Required, Refer to Aircraft's Component Overhaul Manuals For:

- A. Maximum (GPM) Gallons Per Minute
- B. Maximum (PSI) Pound Per Square Inch
- C. Testing Procedures and Operation of Components

Step 2: Refer to Aircraft's Component Overhaul Manuals for Type of Hydraulic Fluid.

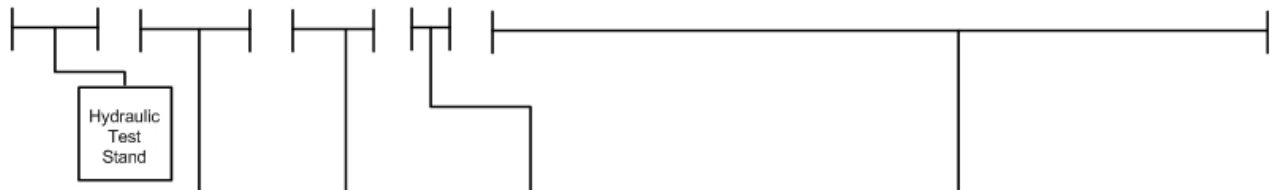
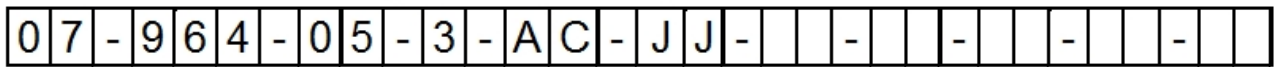
Step 3: Determine the input voltage the Hydraulic Test Stand will be operated on. When ordering, the most common error is selecting incorrect input voltages 50 Hertz the flow will be reduced by 17%

Step 4: Call A&P Hydraulics experienced sales staff for any questions for explanation of the complete range of Hydraulic Test Stand Options that we offer.

**EXAMPLE:**

Pump Test Stand – 50 GPM @ 5000 PSI – Skydrol Fluid – 460 Volt 60 Hertz 3 Phase

Optional: Extra Pressure Gauge (0-60 PSI) and Safety Glass Doors



CHAR	GPM	LPM	PSI	BAR	HP	KW
962	25	95	5000	340	60	45
964	50	189	5000	340	100	75
966	65	246	5000	340	150	112
968	85	322	5000	340	200	149

CHAR	FLUID TYPE
2	Mil-H-5606
3	Mil-H-83282
5	Skydrol
6	Mil-PRF-87257

CHAR	VOLT/FREQ/PHASE
0	208V60Hz/3ph
1	220V60Hz/3ph
2	308V60Hz/3ph
3	460V60Hz/3ph
4	575V60Hz/3ph
6	220V50Hz/3ph
7	380V50Hz/3ph
8	415V50Hz/3ph
9	440V50Hz/3ph

Isolated Digital Pressure Gauge with Port (.25% Accuracy)	
CHAR	OPTION DESCRIPTION
AB	Pressure Gauge (0-25 PSI)
AC	Pressure Gauge (0-60 PSI)
AD	Pressure Gauge (0-100 PSI)
AE	Pressure Gauge (0-500 PSI)
AF	Pressure Gauge (0-1000 PSI)
AG	Pressure Gauge (0-1500 PSI)
AH	Pressure Gauge (0-3000 PSI)
AI	Pressure Gauge (0-5000 PSI)
AK	Pressure Gauge 4-20ma Data Acquisition Output

Isolated Digital Flow Meter with Port (1% Accuracy)	
CHAR	OPTION DESCRIPTION
BC	Flow Meter (.02-0.2 GPM)
BD	Flow Meter (.05-0.5 GPM)
BE	Flow Meter (0.1-1.0 GPM)
BF	Flow Meter (0.2-2.0 GPM)
BG	Flow Meter (1-10 GPM)
BH	Flow Meter (1-15 GPM)
BL	Flow Meter 4-20ma Data Acquisition Output
BM	High Precision Digital Flow Meters (.25% Accuracy)

CHAR	OPTION DESCRIPTION
JJ	Safety Glass Doors
KK	Custom Engineering
LL	Digital Rotary Torquemeter
RR	Rear Door Sound Proofing
SS	Rotary Torquemeter 10,000 RPM
WW	Second Language Operation Placards & Owner's Manual
XX	CE Compliant

