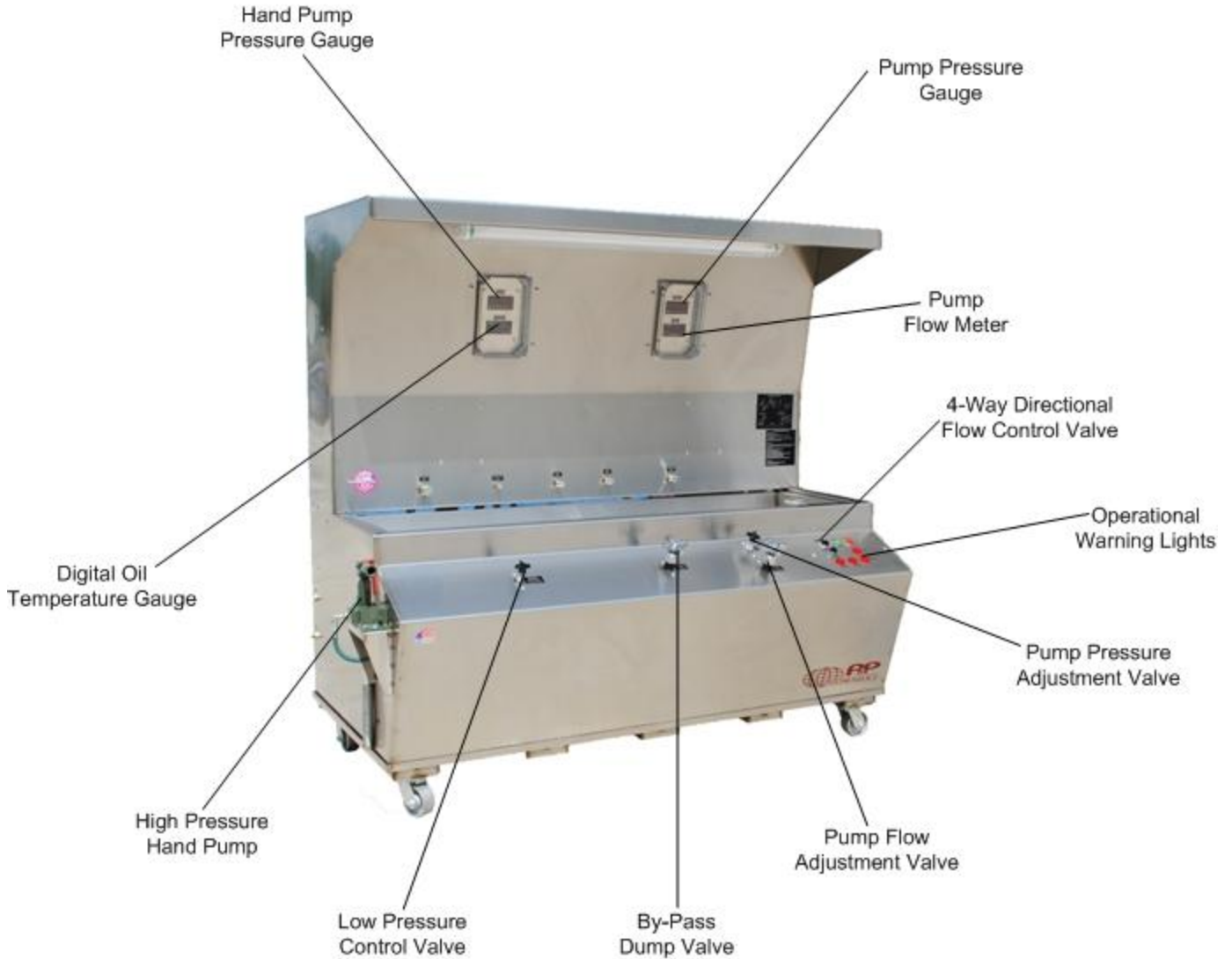


HYDRAULIC TEST STAND

**958
Series**

*Engineered for Years of Continuously Trouble Free Operation,
Includes Precise Digital Gauges*

**2 Year
Warranty**



Model 07-958-05

Features: Precise Digital Flow, Pressure, and Temperature Gauges, Stainless Steel Construction and 100% Duty Cycle

HYDRAULIC TEST STAND

**958
Series**

*Engineered for Years of Continuously Trouble Free Operation,
Includes Precise Digital Gauges*

STANDARD FEATURES:

- **Controls**
 1. Pump Flow Adjustment
 2. Pump Pressure Adjustment
 3. By-Pass Dump Valve
- **Instrumentation**
 1. Digital Pump Flow Meter (1% Accuracy)
 2. Digital Pump Pressure Gauge (.25% Accuracy)
 3. Digital Oil Temperature Gauge
 4. Hour Meter
- **Operational Warning Lights**
 1. Pressure Filter Condition LED Warning Indicator for Clogged Conditions
 2. Return Filter Condition LED Warning Indicator for Clogged Conditions
 3. High Fluid Temperature LED Warning Indicator
- **Super Clean Filtration - Industry Leading Filtration Ensures Quality While Increasing Aircraft Component Life**
 1. High Efficiency, Non-Bypass Pressure Filter (3 Micron Absolute)
 2. Large Capacity Return Filter (6 Micron Absolute)
- **4-Way Directional Flow Control Valve**
Electrical Operation with Port LED Indicator Lights for Testing Cylinders
- **High Pressure Hand Pump (10,000 PSI)**
 1. Digital Pressure Gauge (.25% accuracy)
 2. Pressure Release Valve
 3. Dedicated Port
- 100% Duty Cycle, Will Deliver Maximum Flow @ Maximum Pressure
- Heavy Duty 3 Phase Motor
- All Welded, 14 Gauge B3 (Brushed Finish) Stainless Steel Construction
- Work Sink Drain
- Illuminated Work Area Provided By Overhead Sink Light
- Automatic Oil Cooler Water Solenoid
- Extra Capacity Water to Oil, Oil Cooler
- Stainless Steel Reservoir
- Reservoir Desiccant Breather
- Durable Aluminum, Laser Engraved Placards
- Panel Mounted Operational Instructions
- Guaranteed No Leaks, Stainless Steel Pan Completely Covers Bottom
- Easy Maneuvering Ensured by Two Fixed and Two Swivel 4" Castors with Stability Provided by the Heavy Duty Floor Lock
- Current Pressure Gauge and Flow Meter Certificates of Calibration
- Easy Access Exterior Fluid Sampling Valve to Meet Quality Parameters

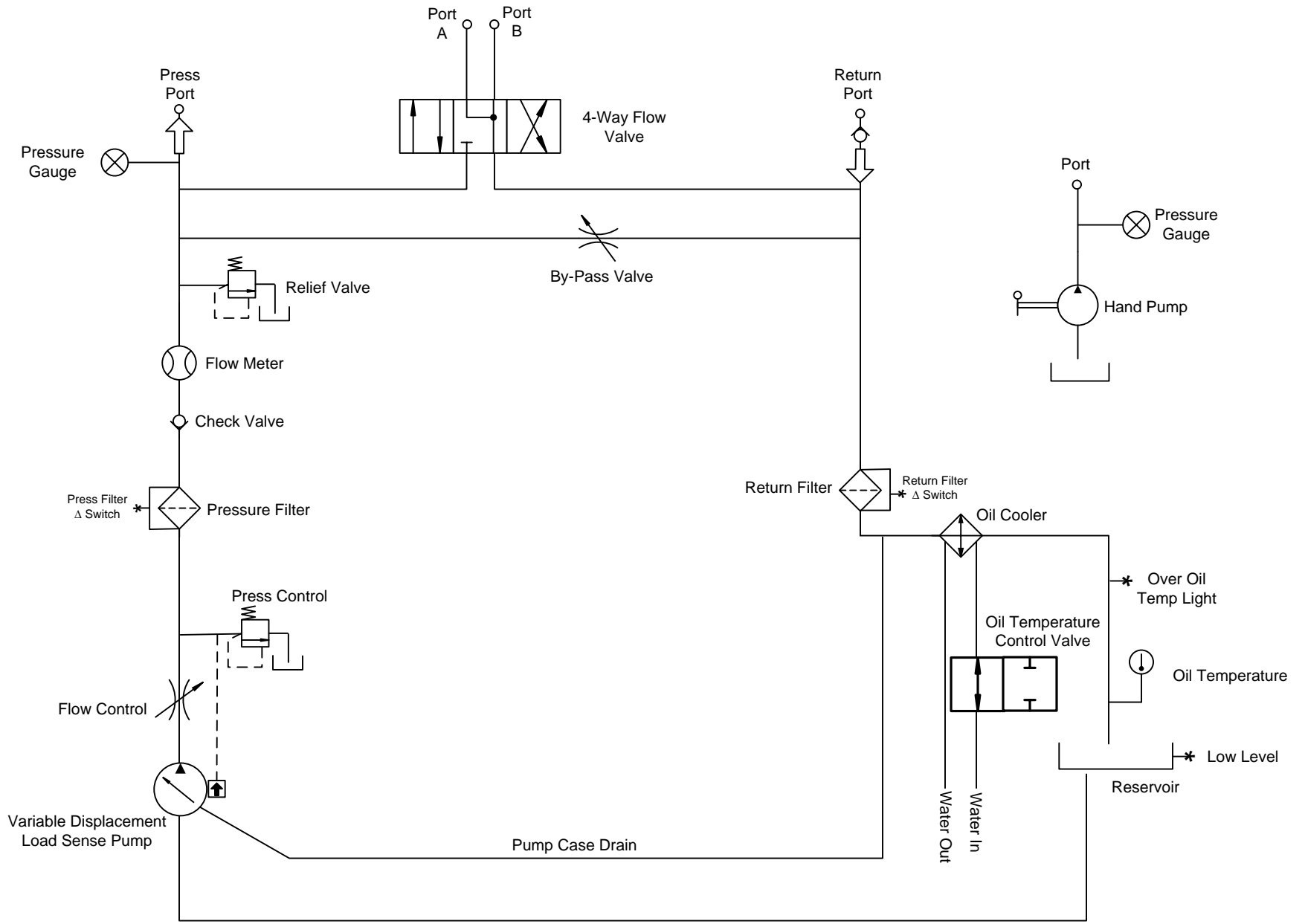
Dimensions: Depth 40", Width 87", Height 77"

SPECIFICATIONS:					
SERIES MODEL	PUMP PRESSURE PSI (bar)	MOTOR HP (kw)	PUMP FLOW		WEIGHT Lbs. (kg)
			50 Hz GPM (lpm)	60 Hz GPM (lpm)	
07-958-**	0 - 5000 PSI 0 - 340 bar	40 HP 30 kw	12 GPM 45 lpm	15 GPM 57 lpm	1750 lbs 793 kg

**Model by Fluid Type: Mil-H-5606 = 02 Mil-H-83282 = 03 Skydrol = 05



9283 Industrial Blvd. Leland, NC 28451 USA
Voice 910.371.1151 Fax 910.371.1152
ap-hydraulics.com



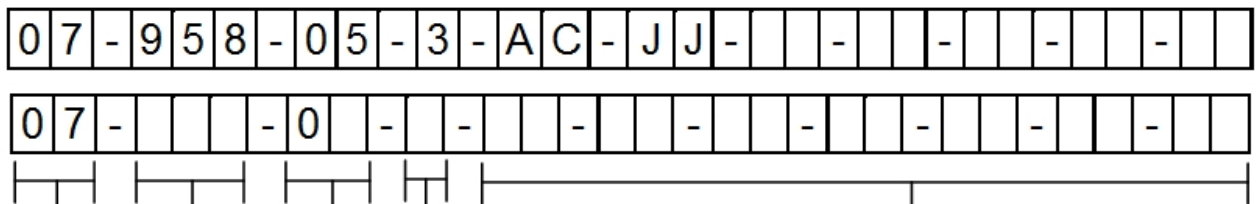
Series 958 Hydraulic Test Stand Schematic

Ordering Instructions

- Step 1: Determine Size of the Hydraulic Test Stand Required, Refer to Aircraft's Component Overhaul Manuals For:
- A. Maximum (GPM) Gallons Per Minute
 - B. Maximum (PSI) Pound Per Square Inch
 - C. Testing Procedures and Operation of Components
- Step 2: Refer to Aircraft's Component Overhaul Manuals for Type of Hydraulic Fluid.
- Step 3: Determine the input voltage the Hydraulic Test Stand will be operated on. When ordering, the most common error is selecting incorrect input voltages 50 Hertz the flow will be reduced by 17%
- Step 4: Call A&P Hydraulics experienced sales staff for any questions for explanation of the complete range of Hydraulic Test Stand Options that we offer.

EXAMPLE:

Hydraulic Test Stand – 10 GPM @ 5000 PSI – Skydrol Fluid – 460 Volt 60 Hertz 3 Phase
 Optional: Extra Pressure Gauge (0-60 PSI) and Safety Glass Doors



CHAR	GPM	LPM	PSI	BAR	HP	KW
958	15	57	5000	340	40	30

CHAR	FLUID TYPE
2	Mil-H-5606
3	Mil-H-83282
5	Skydrol
6	Mil-PRF-87257

CHAR	VOLT/FREQ/PHASE
0	208V60Hz/3ph
1	220V60Hz/3ph
2	308V60Hz/3ph
3	460V60Hz/3ph
4	575V60Hz/3ph
5	200V50Hz/3ph
6	220V50Hz/3ph
7	380V50Hz/3ph
8	415V50Hz/3ph
9	440V50Hz/3ph

Isolated Digital Pressure Gauge with Port (.25% Accuracy)	
CHAR	OPTION DESCRIPTION
AB	Pressure Gauge (0-25 PSI)
AC	Pressure Gauge (0-60 PSI)
AD	Pressure Gauge (0-100 PSI)
AE	Pressure Gauge (0-500 PSI)
AF	Pressure Gauge (0-1000 PSI)
AG	Pressure Gauge (0-1500 PSI)
AH	Pressure Gauge (0-3000 PSI)
AI	Pressure Gauge (0-5000 PSI)
AK	Pressure Gauge 4-20ma Data Acquisition Output

Isolated Digital Flow Meter with Port (1% Accuracy)*	
CHAR	OPTION DESCRIPTION
BC	Flow Meter (.02-0.2 GPM)
BD	Flow Meter (.05-0.5 GPM)
BE	Flow Meter (0.1-1.0 GPM)
BF	Flow Meter (0.2-2.0 GPM)
BG	Flow Meter (1-10 GPM)
BH	Flow Meter (1-15 GPM)
BL	Flow Meter 4-20ma Data Acquisition Output
BM	High Precision Digital Flow Meter (.25% Accuracy)

CHAR	OPTION DESCRIPTION
EE	Air Over Oil Intensifier
JJ	Safety Glass Doors
KK	Custom Engineering
WW	Second Language Operation Placards & Owner's Manual
XX	CE Compliant