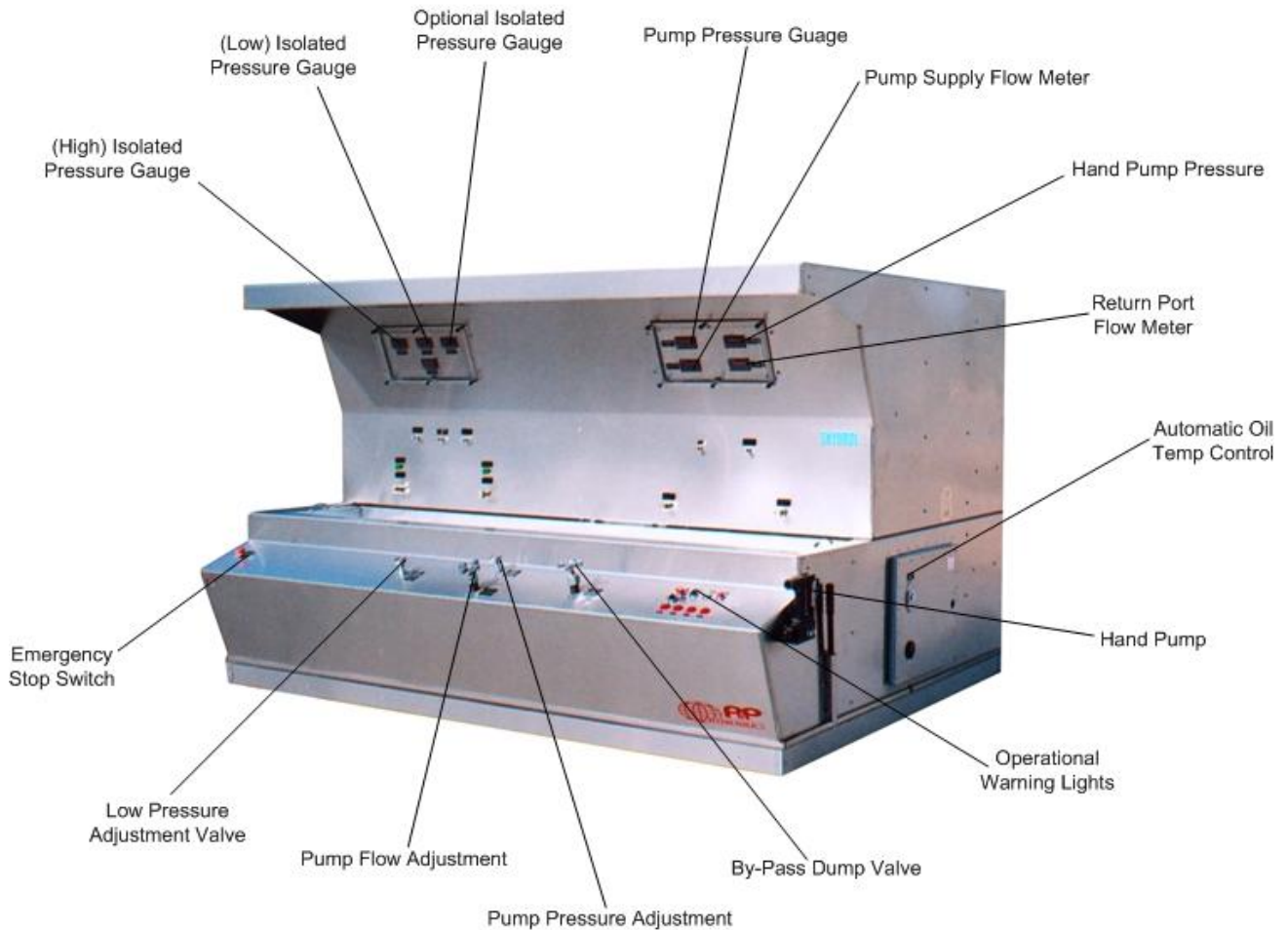


HEAVY DUTY, SINGLE SYSTEM HYDRAULIC TEST STAND

**940
Series**

*Our Competent Engineering Staff Ensures You are Provided with the Exact
Hydraulic Testing Equipment for Current and Future Applications
Which Will Increase Your Profitability*

**2 Year
Warranty**



Model 07-944-05

*Features:
Stainless Steel Construction
Kidney Loop Pump for Continuously Filtering
and Cooling of Hydraulic Fluid,
Precise Digital Gauges*



9283 Industrial Blvd. Leland, NC 28451 USA
Voice 910.371.1151 Fax 910.371.1152
ap-hydraulics.com

HEAVY DUTY, SINGLE SYSTEM HYDRAULIC TEST STAND

*Our Competent Engineering Staff Ensures You are Provided with the Exact
Hydraulic Testing Equipment for Current and Future Application
Which Will Increase Your Profitability*

STANDARD FEATURES:

- **Single System**
 1. Complete Pressure Adjustment (450 – 5000 PSI)
 2. Complete Flow Adjustment (0 – Full GPM)
 3. Pressure and Return Ports
 4. Digital Pressure Gauges (.25% Accuracy)
 5. Digital Supply and Return Flow Meters (1% Accuracy)
 6. Safety Over Pressure Relief Valve
 7. By-Pass Dump Valve
 8. Pump Flow Control Valve
 9. Pump Pressure Control Valve

- **Four Pumps**
 1. Oilgear® Pressure Compensated Pump
 2. High Pressure Hand Pump (10,000 PSI)
 3. Work Sink Drain Pump
 4. Reservoir Kidney Loop Pump

- **High Pressure Hand Pump**
 1. Digital Pressure Gauge (.25% Accuracy)
 2. Pressure Release Valve
 3. Dedicated Port

- **Instrumentation - All Gauges Feature Easy Programmability for Field Calibration**
 - **Two Digital Flow Meters (1% Accuracy)**
 1. Pump Supply Flow
 2. Return Flow
 - **Four Digital Pressure Gauges (.25% Accuracy)**
 1. Pump Supply Pressure (6000 PSI)
 2. Hand Pump (0 – 10,000 PSI)
 3. Medium Isolated Pressure Gauge
 4. High Isolated Pressure Gauge

- **Safety Features**
 1. Ergonomically Located Emergency Stop Switch
 2. Safety Over Pressure Relief Valve
 3. Safety Drip Pan Completely Covers Bottom to Ensure Clean Floors
 4. All Electrical Components Installed in NEMA 4, 12 Enclosure
 5. All Gauges are Fully Enclosed in NEMA 4, 12 Enclosure with a Clear Front Safety Glass Cover
 6. Operational LED Warning Indicator Lights
 7. Dual Heavy Duty Floor Locks to Ensure Stability
 8. Optional Safety Glass Sliding Doors for Work Sink

- **Super Clean Filtration – Industry Leading Filtration Ensures Quality While Increasing Aircraft Component Life**
- High Efficiency, Non-Bypass Pressure Filter (3 Micron Absolute)
- Reservoir Kidney Loop Filter (3 Micron Absolute)
- Sink Drain Filter (3 Micron Absolute)
- Reservoir Fill Pump Filter (3 Micron Absolute)

- **4-Way Directional Flow Control Valve**
Manually Operated 4-Way Directional Flow Control Valve with Complete Flow Control



HEAVY DUTY, SINGLE SYSTEM HYDRAULIC TEST STAND

*Our Competent Engineering Staff Ensures You are Provided with the Exact
Hydraulic Testing Equipment for Current and Future Application
Which Will Increase Your Profitability*

- **Operational Warning Lights**
 1. Pressure Filter Condition
LED Warning Indicator for Clogged Conditions
 2. Kidney Loop Pump Filter Condition
LED Warning Indicator
 3. Reservoir Low Level LED Warning Indicator
 4. High Fluid Temperature LED Warning Indicator
- **2 Stand Alone Noshock® Pressure Gauges**
* Suggested Ranges 0-1000 PSI and 0-6000 PSI
- Over Pressure Gauge Savers on all Gauges
- **Reservoir Kidney Loop Pump**
 - Continuously Filters Fluid
 - Continuously Cools Fluid
- **Automatic Oil Temperature Control**
 - Panel Mounted Oil Temperature Set Point
 - Digital Oil Temperature Gauge
- **Additional Features**
 - All Welded, 14 Gauge B3 (Brushed Finish) Stainless Steel Cabinet
 - Illuminated Work Area Provided By Overhead Sink Light
 - Test Port for all Pressure Gauges
 - Easy Access Exterior Fluid Sampling Valve to Meet Quality Parameters
 - Safety Drip Pan Completely Covers Bottom
 - Work Sink with Perforated Metal Grating
 - Heavy Duty All Welded 1/4" Think Wall Tubing Frame with Fork Lift Brackets
 - Easy Maneuvering Ensured by Two Fixed and Two Swivel Castors with Stability Provided by the Heavy Duty Floor Lock
 - Work Sink Drain Pump with Filter (4 GPM)
 - Durable Laser Engraved, Aluminum Placards
 - Panel Mounted Operational Instructions
 - Current Pressure Gauge and Flow Meter Certificates of Calibration

Dimensions: Length 112" Width 80" Height 77"

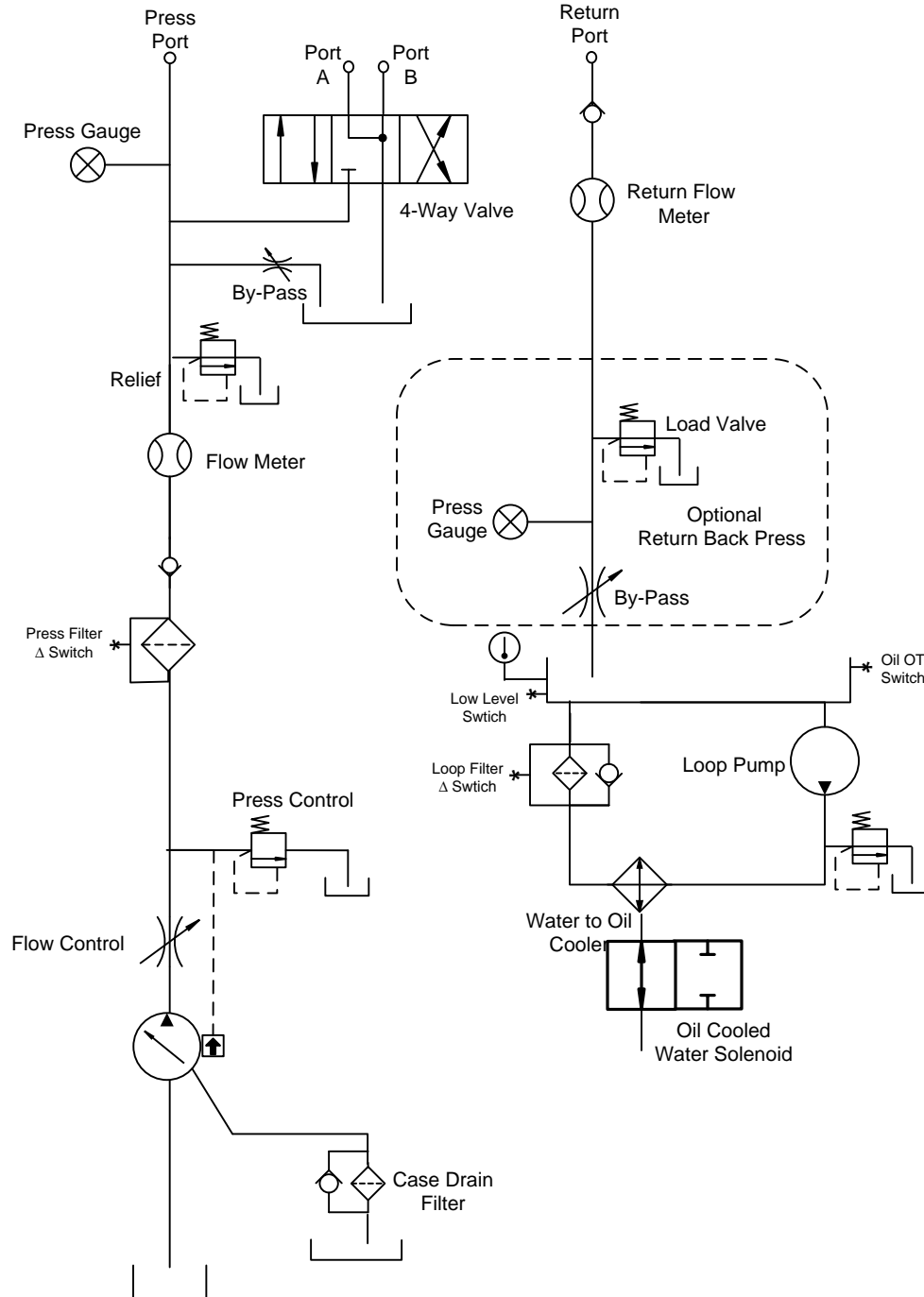
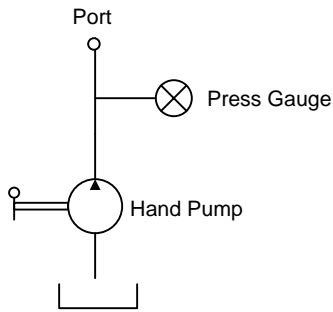
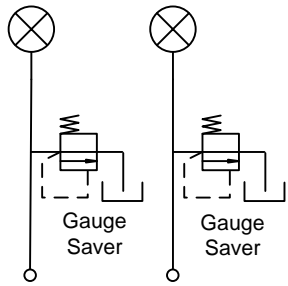
SPECIFICATIONS:					
SERIES MODEL	PUMP PRESSURE PSI (bar)	MOTOR HP (kw)	PUMP FLOW		WEIGHT Lbs. (kg)
			50 Hz GPM (lpm)	60 Hz GPM (lpm)	
07-942-**	450 - 5000 PSI 30 - 340 bar	60 HP 44 kw	20 GPM 75 lpm	25 GPM 94 lpm	3900 lbs 1775 kg
07-944-**	450 - 5000 PSI 30 - 340 bar	75 HP 56 kw	28 GPM 106 lpm	34 GPM 126 lpm	4900 lbs 2227 kg
07-946-**	450 - 5000 PSI 30 - 340 bar	100 HP 74 kw	33 GPM 125 lpm	40 GPM 150 lpm	5100 lbs 2313 kg

**Model by Fluid Type: Mil-H-5606 = 02 Mil-H-83282 = 03 Skydrol = 05



9283 Industrial Blvd. Leland, NC 28451 USA
Voice 910.371.1151 Fax 910.371.1152
ap-hydraulics.com

Isolated Pressure Gauges



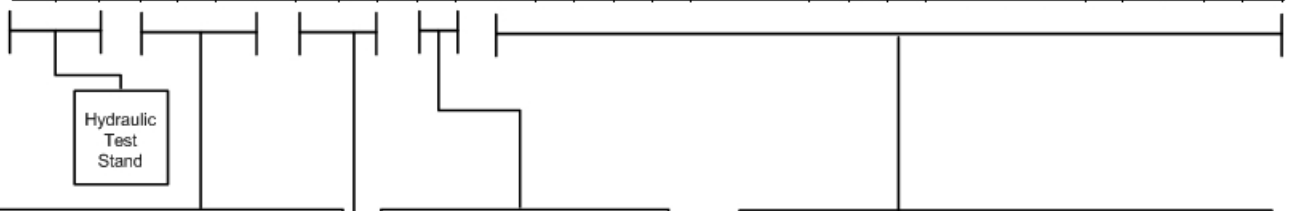
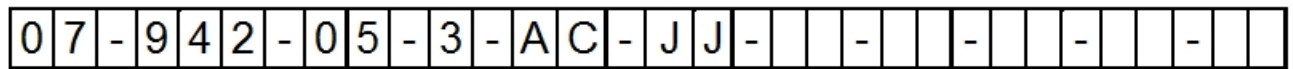
Series 940 Hydraulic Test Stand Schematic

Ordering Instructions

- Step 1: Determine Size of the Hydraulic Test Stand Required, Refer to Aircraft's Component Overhaul Manuals For:
- A. Maximum (GPM) Gallons Per Minute
 - B. Maximum (PSI) Pound Per Square Inch
 - C. Testing Procedures and Operation of Components
- Step 2: Refer to Aircraft's Component Overhaul Manuals for Type of Hydraulic Fluid.
- Step 3: Determine the input voltage the Hydraulic Test Stand will be operated on. When ordering, the most common error is selecting incorrect input voltages 50 Hertz the flow will be reduced by 17%
- Step 4: Call A&P Hydraulics experienced sales staff for any questions for explanation of the complete range of Hydraulic Test Stand Options that we offer.

EXAMPLE:

Hydraulic Test Stand – 25 GPM @ 5000 PSI – Skydrol Fluid – 460 Volt 60 Hertz 3 Phase
 Optional: Extra Pressure Gauge (0-60 PSI) and Safety Glass Doors



CHAR	GPM	LPM	PSI	BAR	HP	KW
942	25	94	5000	340	60	44
944	34	126	5000	340	75	56
946	40	150	5000	340	100	74

CHAR	FLUID TYPE
2	Mil-H-5606
3	Mil-H-83282
5	Skydrol
6	Mil-PRF-87257

CHAR	VOLT/FREQ/PHASE
0	208V60Hz/3ph
1	220V60Hz/3ph
2	308V60Hz/3ph
3	460V60Hz/3ph
4	575V60Hz/3ph
5	200V50Hz/3ph
6	220V50Hz/3ph
7	380V50Hz/3ph
8	415V50Hz/3ph
9	440V50Hz/3ph

Isolated Digital Pressure Gauge with Port (.25% Accuracy)	
CHAR	OPTION DESCRIPTION
AB	Pressure Gauge (0-25 PSI)
AC	Pressure Gauge (0-60 PSI)
AD	Pressure Gauge (0-100 PSI)
AE	Pressure Gauge (0-500 PSI)
AF	Pressure Gauge (0-1000 PSI)
AG	Pressure Gauge (0-1500 PSI)
AH	Pressure Gauge (0-3000 PSI)
AI	Pressure Gauge (0-5000 PSI)
AK	Pressure Gauge 4-20ma Data Acquisition Output

Isolated Digital Flow Meter with Port (1% Accuracy)	
CHAR	OPTION DESCRIPTION
BC	Flow Meter (.02-0.2 GPM)
BD	Flow Meter (.05-0.5 GPM)
BE	Flow Meter (0.1-1.0 GPM)
BF	Flow Meter (0.2-2.0 GPM)
BG	Flow Meter (1-10 GPM)
BH	Flow Meter (1-15 GPM)
BI	Flow Meter (2-25 GPM)
BL	Flow Meter 4-20ma Data Acquisition Output
BM	High Precision Digital Flow Meter (.25% Accuracy)

CHAR	OPTION DESCRIPTION
II	Return Back Pressure Valve
JJ	Safety Glass Doors
KK	Custom Engineering
RR	Rear Door Sound Proofing
WW	Second Language Operation Placards & Owner's Manual
XX	CE Compliant