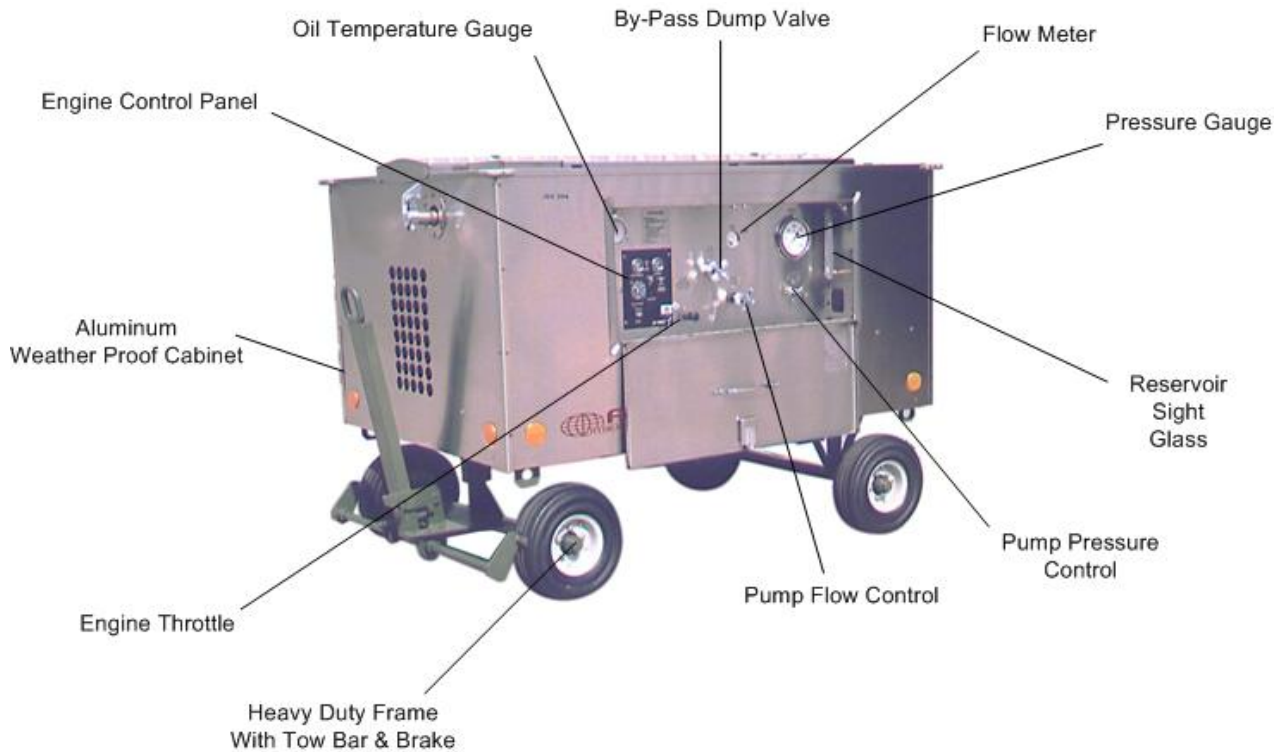


WEATHER PROOF DIESEL POWERED HYDRAULIC POWER UNIT

**850
Series**

**2 Year
Warranty**

*Features Weather-Proof, Aluminum Cabinet and
Dependable Perkins® Diesel Engine
Available in Electric Motor as Prime Mover*



Model 05-854-05

- **Perkins® Diesel Engine**
 1. Perkins® Worldwide Factory Support
 2. Automatic Engine Shut-Down Low Oil Pressure, Over Temperature
 4. Current Low Emission Standards
 5. Will Operate on Jet-A or Diesel Fuel
- **Panel Mounted Controls for Ease of Operation and Safety**
 1. Pump Flow Adjustment (0-Full GPM)
 2. Pump Pressure Adjustment (0-Full PSI)
 3. By-Pass Dump Valve
 4. Engine Controls, Start, Throttle and Tach
- **Durable 0.90 Brushed Aluminum Cabinet Construction**
 1. Large Hinged Rear Access Door Provides Convenient Access and Inspection
 2. Removable Top Panel for Ease of Access to Unit's Components
 3. No Exterior Paint to Fade or Chip with Usage
 4. Guaranteed Not to Rust
- **Safety Assurance with Automatic Engine Shut-Down**
 1. Low Oil Pressure
 2. Coolant Over Temperature
- **Super Clean Filtration – Industry Leading Filtration Ensures Quality While Increasing Aircraft Component Life and Decreasing Aircraft Filter Changes**
 1. High Efficiency, Non-Bypass Pressure Filter (3 Micron Absolute)
 2. Large Capacity Return Filter (6 Micron Absolute)
- **Operational Warning Lights**
 1. Engine Water Temperature and Oil Pressure LED Warning Indicator
- **Instrumentation**
 1. High Pressure Dual Scale Flow Meter (4% Accuracy)
 2. 6" Liquid Filled Pressure Gauge (1% Accuracy)
 3. Dual Scale Pyrometer / Oil Temperature Gauge
 4. Hour Meter



9283 Industrial Blvd. Leland, NC 28451 USA
Voice 910.371.1151 Fax 910.371.1152
ap-hydraulics.com

WEATHER PROOF DIESEL POWERED HYDRAULIC POWER UNIT

*Features Weather-Proof, Aluminum Cabinet
and Dependable Perkins® Diesel Engine
Available in Electric Motor as Prime Mover*

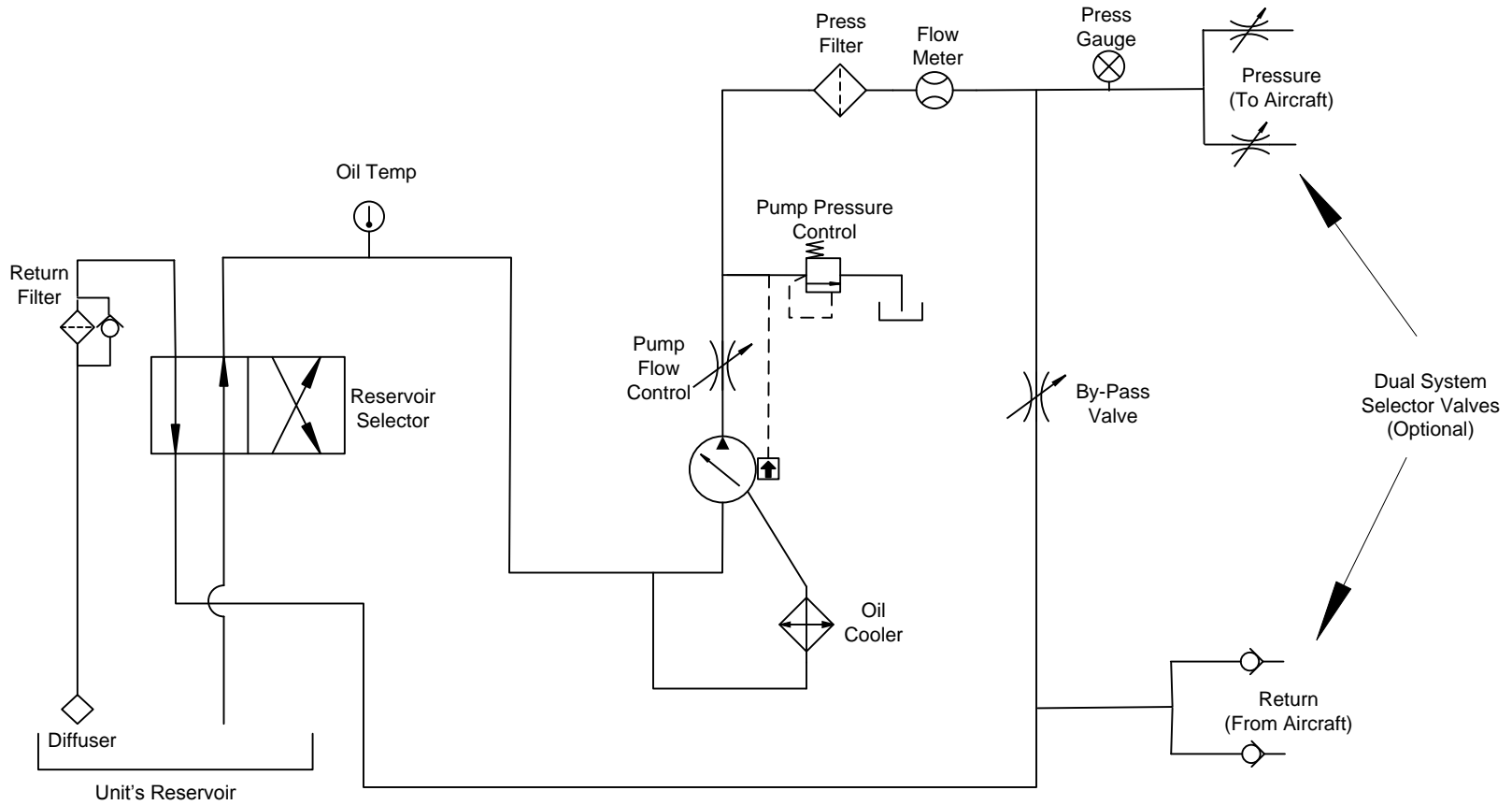
Standard Features:

- 100% Duty Cycle, Will Deliver Maximum Flow @ Maximum Pressure
- Heavy Duty Trailer with Tow Bar and Brake
- Solid 16" Wheels, Guaranteed To Never Go Flat
- All Welded 11 Gauge Aluminum Cabinet
- Heavy Duty All Welded Steel Frame with Fork Lift Tubes
- Weather Proof Cabinet
- Removable Top Panels and Rear Door for Ease of Access to Unit's Components
- High Efficiency Oil Cooler
- Easy Access Exterior Fluid Sampling Valve to Meet Quality Parameters
- Stainless Steel Reservoir (150% of Maximum Pump Flow)
- Stainless Steel Fuel Tank (8 hrs Operational)
- Reservoir Selector Valves (to use either unit's or aircraft's reservoir)
- Standard Pressure Hoses and Return Hoses, 25 ft. (7.62 m) Long
- Current Pressure Gauge and Flow Meter Certificate of Calibration
- Durable Laser Engraved, Aluminum Placards
- Panel Mounted Operational Instructions

SPECIFICATIONS:								
SERIES MODEL	PUMP PRESSURE PSI (bar)	ENGINE HP (kw)	PUMP FLOW GPM (lpm)	RESERVOIR CAPACITY	WEIGHT Lbs. (kg)	LENGTH In (cm)	WIDTH In (cm)	HEIGHT In (cm)
05-852-**	450 - 4000 PSI 30 - 272 bar	50 HP 37 kw	20 GPM 76 lpm	50 US gal 189 lt	3900 lbs 1769 kg	86 In 218 cm	60 In 152 cm	68 In 173 cm
05-854-**	450 - 4000 PSI 30 - 272 bar	100 HP 75 kw	50 GPM 189 lpm	100 US gal 379 lt	6100 lbs 2766 kg	86 In 218 cm	60 In 152 cm	68 In 173 cm
05-856-**	450 - 4000 PSI 30 - 272 bar	150 HP 112 kw	70 GPM 264 lpm	170 US gal 643 lt	7100 lbs 3220 kg	102 In 259 cm	76 In 193 cm	75 In 190 cm
05-858-**	450 - 5000 PSI 30 - 340 bar	200 HP 149 kw	70 GPM 264 lpm	180 US gal 681 lt	7700 lbs 3493 kg	102 In 259 cm	76 In 193 cm	75 In 190 cm

**Model by Fluid Type: Mil-H-5606 = 02 Mil-H-83282 = 03 Skydrol = 05





Series 850 Hydraulic Power Unit Schematic

Ordering Instructions

Step 1: Determine Size of the Hydraulic Power Unit Required, Refer to Aircraft's Maintenance Manual For
 A. Maximum (GPM) Gallons Per Minute B. Maximum (PSI) Pound Per Square Inch

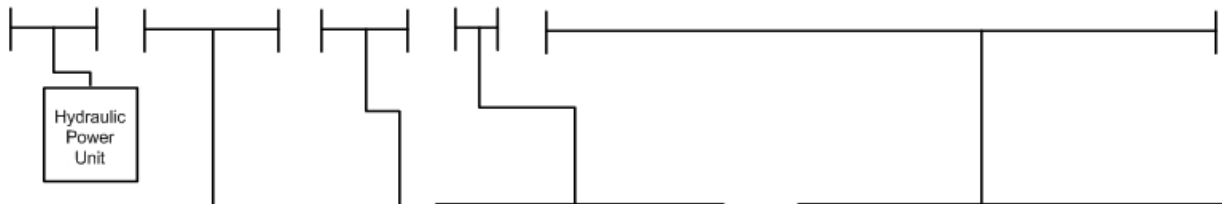
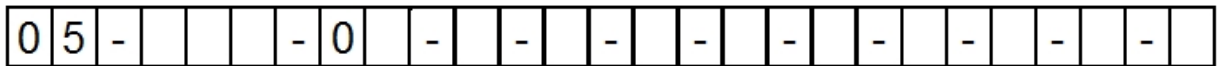
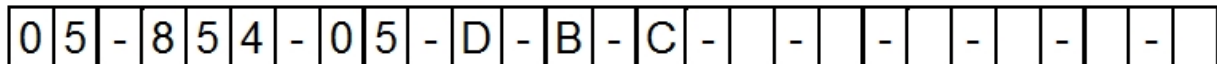
Step 2: Refer to Aircraft's Maintenance Manual for Type of Hydraulic Fluid.

Step 3: Call A&P Hydraulics experienced sales staff for any questions for explanation of the complete range of Hydraulic Power Unit Options that we offer.

EXAMPLE:

Hydraulic Power Unit – 50 GPM @ 4000 PSI – Skydrol Fluid – Diesel Engine

Optional: 50 ft. Hoses and Dual System



CHAR	GPM	LPM	PSI	BAR	HP	KW
852	20	76	4000	272	50	37
854	50	189	4000	272	100	75
856	70	264	4000	264	150	112
858	70	264	5000	264	200	149

CHAR	DESCRIPTION
D	Diesel Engine

CHAR	FLUID TYPE
2	Mil-H-5606
3	Mil-H-83282
5	Skydrol
6	Mil-PRF-87257

CHAR	OPTION DESCRIPTION
B	50 ft. Hoses)
C	Dual System
M	Reservoir Hand Pump
T	Return Back Pressure w/ Sight Glass
U	Return Sight Glass
V	Return Back Pressure
W	Second Language Operation Placards & Owner's Manual
X	CE Compliant
Y	Custom Engineering

