

# HEAVY DUTY HYDRAULIC TEST/ POWER UNIT

**770  
Series**

**3 Year  
Warranty**

*Featuring Safety Automatic Shut-Down, Charge Pump That Continuously Filters and Cools Fluid, and Kidney Loop Oil Polishing System*



Model 05-776-05

- **Performance Assured 100% Duty Cycle**
  1. Will deliver Maximum Flow @ Maximum Pressure
  2. Industrial Duty Lincoln® Motor
  3. Heavy Duty Motor Starter with Over Load Protection
  4. Charge Pump with Pressure Compensated Piston Pump
  5. Industry's Best – 3 Year Warranty
- **Panel Mounted Controls for Ease of Operation and Safety**
  1. Complete Pump Flow Adjustment (0-Full GPM)
  2. Complete Pump Pressure Adjustment (250-Full PSI)
  3. By-Pass Dump Valve
  4. Electric Reservoir Fill Pump System (For Servicing Aircraft's Reservoir) (3 GPM)
- **Super Clean Filtration - Industry Leading Filtration Ensures Quality While Increasing Aircraft Component Life and Decreasing Aircraft Filter Changes**
  1. 2<sup>nd</sup> Stage Reservoir Fill Pump Filter (.25 Micron Absolute)
  2. Case Drain Filter (6 Micron Absolute)  
\*Desiccant (Water Absorbing) Reservoir Air Breather
  3. Charge Pump Continuously Filters and Cools Fluid
  4. Extra Capacity Charge Pump Filter (6 Micron Absolute)
  5. Reservoir Fill Pump Filter (.25 Micron Absolute)
- **Safety Automatic Shut-Down**
  1. Oil Over Temperature
  2. Charge Pump Low Pressure
  3. Pressure Filter Clogged
  4. Reservoir Low Level
- **Instrumentation**
  1. Digital Flow Meter (1% accuracy)
  2. Digital Pressure Gauges (.5% accuracy)
  3. Digital Oil Temperature Gauge (1% accuracy)
  4. All Digital Gauges Installed in Skydrol Resistant Enclosure
  5. Hour Meter
  6. All Digital Gauges Installed in NEMA 4 Enclosure
  7. All Gauges Have A Safety Glass Cover for Durability
- **Operational Warning Lights**
  1. Low Boost Pump Pressure LED Warning Indicator
  2. High Fluid Temperature LED Warning Indicator
  3. Reservoir Low Level LED Warning Indicator
  4. Operational Beacon
  5. Electrical Input Monitoring with Warning Lights
    - A. Correct Voltage Input
    - B. Correct Phase Input
    - C. Over Voltage Input
    - D. Under Voltage Input
    - E. Over Amperage Input
    - F. Out of Phase Input
    - G. Correct Phase Input
  6. Maintenance Required / Filter Replacement LED Reminder Indicator
  7. Kidney Loop Filter Clogged Condition LED Warning Indicator
  8. Charge Pump Filter Condition LED Warning Indicator



9283 Industrial Blvd. Leland, NC 28451 USA  
Voice 910.371.1151 Fax 910.371.1152  
ap-hydraulics.com

# HEAVY DUTY HYDRAULIC TEST/ POWER UNIT

**770  
Series**

*Featuring Safety Automatic Shut-Down, Charge Pump That  
Continuously Filters and Cools Fluid, and  
Kidney Loop Oil Polishing System*

**3 Year  
Warranty**

**Standard Features:**

- 100% Duty Cycle, Will Deliver Maximum Flow @ Maximum Pressure
- Heavy Duty Tubular Frame with 16" Solid Wheels
- Heavy Duty Tow Bar and Parking Brake
- Puncture Proof Tires, Guaranteed No Flats
- All Welded 0.90 Brushed Aluminum Construction
- Removable Top Panels and Rear Door for Ease of Access to Unit's Components
- High Efficiency Aluminum Oil Cooler with 3 Phase Electric Fan
- Stainless Steel Reservoir (200 Gallons)
- All Electrical Components Installed in Liquid Proof Enclosures (NEMA 4, 12)
- Easy Access Exterior Fluid Sampling Valve to Meet Quality Parameters
- Extra Capacity, Reservoir Desiccant (Water Absorbing) Breather
- Reservoir Selector Valve (To Use Either Aircraft's or Unit's Reservoir)
- Standard #16 Pressure Hoses and #32 Return Hoses, 25 ft. (7.62 m) Long
- Standard 50 ft. ( 15.2 m) Electrical Input Cable
- Durable Laser Engraved , Aluminum Placards
- Panel Mounted Operational Instructions
- Current Pressure Gauge and Flow Meter Certificate of Calibration
- Guaranteed No Leaks, Stainless Steel Pan Completely Covers Bottom

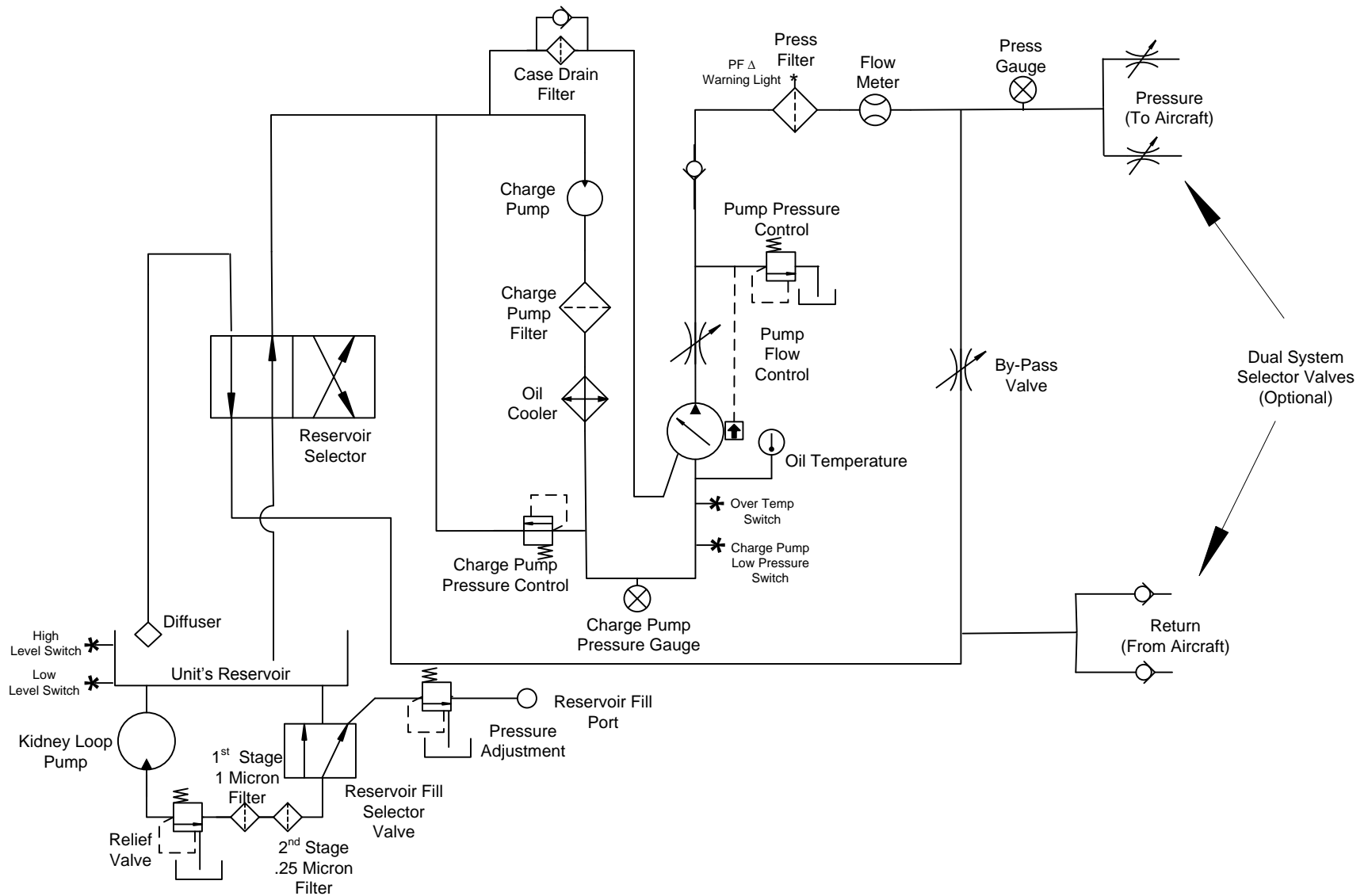
Dimensions: Length 116 in (294 cm), Width 76 in (193 cm), Height 70 in (177 cm)

<b>SPECIFICATIONS:</b>					
<b>SERIES MODEL</b>	<b>PUMP PRESSURE PSI (bar)</b>	<b>MOTOR HP (kw)</b>	<b>PUMP FLOW</b>		<b>WEIGHT Lbs. (kg)</b>
			<b>50 Hz GPM (lpm)</b>	<b>60 Hz GPM (lpm)</b>	
05-772-05	450 - 3500 PSI 30 - 238 bar	100 HP 74 kw	41 GPM 157 lpm	50 GPM 189 lpm	4600 lbs 2086 kg
05-773-05	450 - 4000 PSI 30 - 272 bar	125 HP 92 kw	50 GPM 189 lpm	63 GPM 238 lpm	5000 lbs 2268 kg
05-774-05	450 - 5000 PSI 30 - 340 bar	150 HP 112 kw	50 GPM 189 lpm	63 GPM 238 lpm	5850 lbs 2653 kg
05-775-05	450 - 4000 PSI 30 - 272 bar	150 HP 112 kw	66 GPM 249 lpm	80 GPM 302 lpm	5900 lbs 2676 kg
05-776-05	450 - 5000 PSI 30 - 340 bar	200 HP 149 kw	66GPM 249 lpm	80 GPM 302 lpm	6200 lbs 2812 kg

\*\*Model by Fluid Type: Mil-H-5606 = 02 Mil-H-83282 = 03 Skydrol = 05



9283 Industrial Blvd. Leland, NC 28451 USA  
Voice 910.371.1151 Fax 910.371.1152  
ap-hydraulics.com



Series 770 Hydraulic Test / Power Unit Schematic

# Ordering Instructions

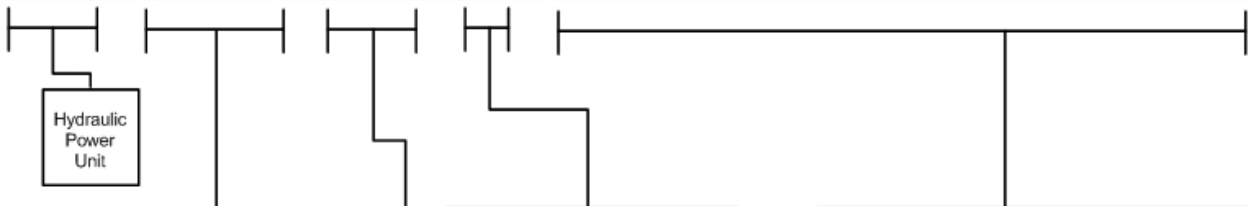
- Step 1: Determine Size of the Hydraulic Power Unit Required, Refer to Aircraft's Maintenance Manual For  
 A. Maximum (GPM) Gallons Per Minute                      B. Maximum (PSI) Pound Per Square Inch
- Step 2: Refer to Aircraft's Maintenance Manual for Type of Hydraulic Fluid.
- Step 3: Determine the input voltage the Hydraulic Power Unit will be operated on. When ordering, the most common error is selecting Incorrect input voltages, 50 Hertz the flow will be reduced by 17%
- Step 4: Call A&P Hydraulics experienced sales staff for any questions for explanation of the complete range of Hydraulic Power Unit Options that we offer.

**EXAMPLE:**

Hydraulic Power Unit – 60 GPM @ 5000 PSI – Skydrol Fluid – 460 Volt 60 Hertz 3 Phase  
 Optional: 50 ft. Hoses and Return Back Pressure with Sight Glass

0 5 - 7 7 4 - 0 5 - 3 - B - T - - - - -

0 5 - - - - - 0 - - - - - - - - - - -



CHAR	GPM	LPM	PSI	BAR	HP	KW
772	50	189	3500	238	100	74
773	63	238	4000	272	125	92
774	63	238	5000	340	150	112
775	80	302	4000	272	150	112
776	80	302	5000	340	200	149

CHAR	VOLT/FREQ/PHASE
2	308V60Hz/3ph
3	460V60Hz/3ph
4	575V60Hz/3ph
7	380V50Hz/3ph
8	415V50Hz/3ph
9	440V50Hz/3ph

CHAR	FLUID TYPE
2	Mil-H-5606
3	Mil-H-83282
5	Skydrol
6	Mil-PRF-87257

CHAR	OPTION DESCRIPTION
B	50 ft. Hoses)
C	Dual System
T	Return Back Pressure w/ Sight Glass
U	Return Sight Glass
V	Return Back Pressure
W	Second Language Operation Placards & Owner's Manual
X	CE Compliant
Y	Custom Engineering

