

HEAVY DUTY HYDRAULIC TEST/ POWER UNIT

**760
Series**

**3 Year
Warranty**

*Featuring Digital Flow Meter, Digital Pressure Gauge,
Digital Oil Temperature Gauge and Charge Pump That
Continuously Filters and Cools Fluid*



Model 05-762-05

- **Performance Assured 100% Duty Cycle**
 1. Will deliver Maximum Flow @ Maximum Pressure
 2. Industrial Duty Lincoln® Motor
 3. Heavy Duty Motor Starter with Over Load Protection
 4. Industry's Best – 3 Year Warranty
- **Panel Mounted Controls for Ease of Operation and Safety**
 1. Complete Pump Flow Adjustment (0-Full GPM)
 2. Complete Pump Pressure Adjustment (250-Full PSI)
 3. By-Pass Dump Valve
- **Super Clean Filtration – Industry Leading Filtration Ensures Quality While Increasing Aircraft Component Life and Decreasing Aircraft Filter Changes**
 1. High Efficiency, Non By-Pass Pressure Filter (3 Micron Absolute)
 2. Case Drain Filter (6 Micron Absolute)
*Desiccant (Water Absorbing) Reservoir Air Breather
 3. Charge Pump Continuously Filters and Cools Fluid
 4. Extra Capacity Charge Pump Filter (6 Micron Absolute)
- **Instrumentation**
 1. Digital Flow Meter (1% accuracy)
 2. Digital Pressure Gauges (.5% accuracy)
 3. Digital Pyrometer / Oil Temperature Gauge
 4. All Digital Gauges Installed in Skydrol Resistant Enclosure
 5. Hour Meter
 6. All Digital Gauges Installed in NEMA 4 Enclosure
 7. All Gauges Have A Safety Glass Cover for Durability
- **Operational Warning Lights**
 1. Charge Pump Low Pressure Automatic Shut Down
 2. Pressure Filter Condition LED Warning Indicator for Clogged Conditions
 3. Maintenance Required / Filter Replacement LED Indicator
 4. High Fluid Temperature LED Warning Indicator
 5. Reservoir Low Level LED Warning Indicator
 6. Operational Beacon
 7. Charge Pump Condition LED Warning Indicator
- **Safety Automatic Shut-Down**
 1. Oil Over Temperature
 2. Charge Pump Low Pressure
 3. Pressure Filter Clogged
 4. Reservoir Low Level



9283 Industrial Blvd. Leland, NC 28451 USA
Voice 910.371.1151 Fax 910.371.1152
ap-hydraulics.com

HEAVY DUTY HYDRAULIC TEST/ POWER UNIT

**760
Series**

*Featuring Digital Flow Meter, Digital Pressure Gauge,
Digital Oil Temperature Gauge and Charge Pump That
Continuously Filters and Cools Fluid*

**3 Year
Warranty**

Standard Features:

- 100% Duty Cycle, Will Deliver Maximum Flow @ Maximum Pressure
- Reservoir Fill Pump System (For Servicing Aircraft's Reservoir)
- Heavy Duty Tubular Frame with 12" Solid Wheels
- Heavy Duty Tow Bar and Parking Brake
- Puncture Proof Tires, Guaranteed No Flats
- All Welded Aluminum Construction
- Removable Top Panels and Rear Door for Ease of Access to Unit's Components
- High Efficiency Aluminum Oil Cooler with 3 Phase Electric Fan
- Stainless Steel Reservoir (70 Gallons)
- Reservoir Fill Pump for Servicing Aircraft's Reservoir
- Easy Access Exterior Fluid Sampling Valve to Meet Quality Parameters
- Extra Capacity, Reservoir Desiccant Breather
- Reservoir Selector Valves (To Use Either Aircraft's or Unit's Reservoir)
- Standard #12 Pressure Hoses and #24 Return Hoses, 25 ft. (7.62 m) Long
- Standard 50 ft. (15.2 m) Electrical Input Cable
- Durable Aluminum Laser Engraved Placards
- Panel Mounted Operational Instructions
- Guaranteed No Leaks, Stainless Steel Pan Completely Covers Bottom
- All Electrical Components Installed in Liquid Proof Enclosures (NEMA 4, 12)
- Current Pressure Gauge and Flow Meter Certificate of Calibration

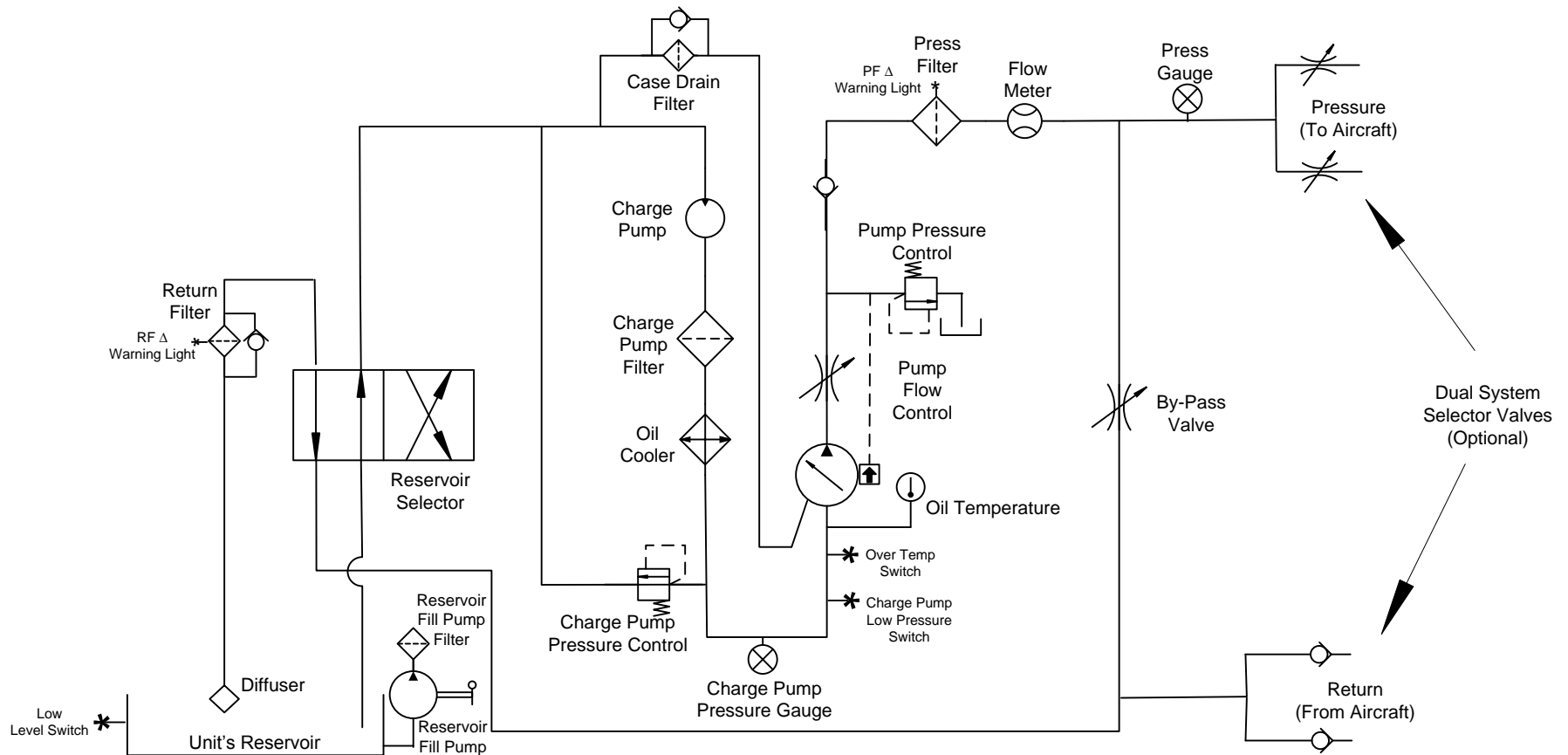
Dimensions: Length 86 in (218 cm), Width 56 in (142 cm), Height 66 in (167 cm)

SPECIFICATIONS:					
SERIES MODEL	PUMP PRESSURE PSI (bar)	MOTOR HP (kw)	PUMP FLOW		WEIGHT Lbs. (kg)
			50 Hz GPM (lpm)	60 Hz GPM (lpm)	
05-760-**	450 - 4000 PSI 30 - 272 bar	50 HP 37 kw	21 GPM 79 lpm	25 GPM 95 lpm	3750 lbs 1701 kg
05-761-**	450 - 5000 PSI 30 - 340 bar	75 HP 56 kw	21 GPM 79 lpm	25 GPM 95 lpm	3900 lbs 1769 kg
05-762-**	450 - 4000 PSI 30 - 272 bar	75 HP 56 kw	28 GPM 125 lpm	35 GPM 133 lpm	3800 lbs 1724 kg
05-763-**	450 - 5000 PSI 30 - 340 bar	100 HP 74 kw	28 GPM 125 lpm	35 GPM 133 lpm	4200 lbs 1905 kg

**Model by Fluid Type: Mil-H-5606 = 02 Mil-H-83282 = 03 Skydrol = 05



9283 Industrial Blvd. Leland, NC 28451 USA
Voice 910.371.1151 Fax 910.371.1152
ap-hydraulics.com



Series 760 Hydraulic Test / Power Unit Schematic

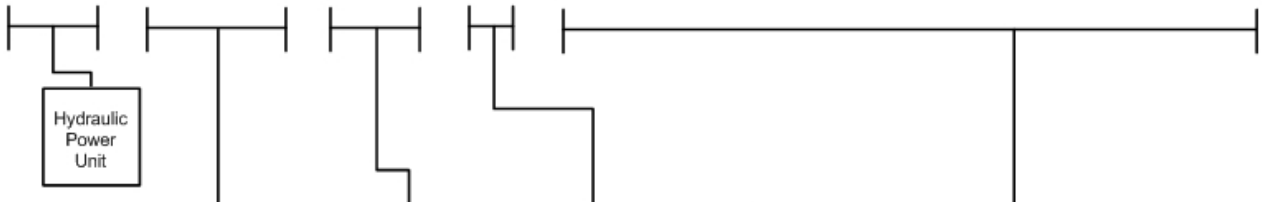
Ordering Instructions

- Step 1: Determine Size of the Hydraulic Power Unit Required, Refer to Aircraft's Maintenance Manual For
 A. Maximum (GPM) Gallons Per Minute B. Maximum (PSI) Pound Per Square Inch
- Step 2: Refer to Aircraft's Maintenance Manual for Type of Hydraulic Fluid.
- Step 3: Determine the input voltage the Hydraulic Power Unit will be operated on. When ordering, the most common error is selecting Incorrect input voltages, 50 Hertz the flow will be reduced by 17%
- Step 4: Call A&P Hydraulics experienced sales staff for any questions for explanation of the complete range of Hydraulic Power Unit Options that we offer.

EXAMPLE:

Hydraulic Power Unit – 25 GPM @ 5000 PSI – Skydrol Fluid – 460 Volt 60 Hertz 3 Phase

Optional: 50 ft. Hoses and Dual System



CHAR	GPM	LPM	PSI	BAR	HP	KW
760	25	95	4000	272	50	37
761	25	95	5000	340	75	56
762	35	133	4000	272	75	56
763	35	133	5000	340	100	74

CHAR	VOLT/FREQ/PHASE
0	208V60Hz/3ph
1	220V60Hz/3ph
2	308V60Hz/3ph
3	460V60Hz/3ph
4	575V60Hz/3ph
5	200V50Hz/3ph
6	220V50Hz/3ph
7	380V50Hz/3ph
8	415V50Hz/3ph
9	440V50Hz/3ph

CHAR	FLUID TYPE
2	Mil-H-5606
3	Mil-H-83282
5	Skydrol
6	Mil-PRF-87257

CHAR	OPTION DESCRIPTION
B	50 ft. Hoses
C	Dual System
G	Voltage Monitor (208-220V)
H	Voltage Monitor (308-380V)
I	Voltage Monitor (415-460V)
J	Voltage Monitor (575V)
T	Return Back Pressure w/ Sight Glass
U	Return Sight Glass
V	Return Back Pressure
W	Second Language Operation Placards & Owner's Manual
X	CE Compliant
Y	Custom Engineering