

WEATHER PROOF ELECTRIC POWERED HYDRAULIC POWER UNIT

**750
Series**

**2 Year
Warranty**

*Features Weather-Proof Aluminum Cabinet with
Heavy Duty Frame and Tow Bar*



Model 05-752-05

- **Performance Assured 100% Duty Cycle**
 1. Will deliver Maximum Flow @ Maximum Pressure
 2. Industrial Duty Lincoln® Motor
 3. Heavy Duty Motor Starter with Over Load Protection
- **Panel Mounted Controls for Ease of Operation and Safety**
 1. Complete Pump Flow Adjustment (0-Full GPM)
 2. Complete Pump Pressure Adjustment (250-Full PSI)
 3. By-Pass Dump Valve
- **Super Clean Filtration – Industry Leading Filtration Ensures Quality While Increasing Aircraft Component Life and Decreasing Aircraft Filter Changes**
 1. High Efficiency, Non-Bypass Pressure Filter (3 Micron Absolute)
 2. Large Capacity Return Filter (6 Micron Absolute)
- **Operational Warning Lights**
 1. Pressure Filter Condition LED Warning Indicator for Clogged Conditions
 2. High Fluid Temperature LED Warning Indicator
- **Instrumentation**
 1. High Pressure, Dual Scale Flow Meter (4% Accuracy)
 2. Test Quality 6" Pressure Gauge (1% Accuracy)
 3. Dual Scale Pyrometer / Oil Temperature Gauge (2% Accuracy)
 4. Hour Meter
- **Sturdy Weather Resistant Construction**
 1. Durable 0.90 Brushed Aluminum Cabinet Construction
 2. Large Front Hinged Door Provides Protection for Instrumentation and Controls
 3. Large Rear Hinged Access Door Provides Convenient Access and Inspection
 4. Removable Top Panel for Ease of Access to Unit's Components
 5. No Exterior Paint to Fade or Chip with Usage
 6. Guaranteed Not to Rust
 7. Heavy Duty Frame with Fork Lift Tubes
 8. 16" Solid Wheels – Guaranteed No Flats
 9. Easy Maneuverability Between Hangars Provided By the Heavy Duty Trailer with Tow Bar and Brake

WEATHER PROOF ELECTRIC POWERED HYDRAULIC POWER UNIT

*Features Weather-Proof Aluminum Cabinet with
Heavy Duty Frame and Tow Bar*

Standard Features:

- Weather Proof Cabinet
- Easy Maneuverability Between Hangars Provided By the Heavy Duty Trailer with Tow Bar and Brake
- Solid Tires Guaranteed to Never go Flat
- 100% Duty Cycle, Will Deliver Maximum Flow @ Maximum Pressure
- All Welded 0.90 Aluminum Construction
- Heavy Duty All Welded Frame with Fork Lift Tubes
- Removable Top Panels and Rear Door for Ease of Access to Unit's Components
- High Efficiency Aluminum Oil Cooler with 3 Phase Electric Fan
- Stainless Steel Reservoir (120 Gallons)
- All Electrical Components Installed in Liquid Proof Enclosures (NEMA 4, 12)
- Safety Assured Exterior Electrical Panel Access
- Current Pressure Gauge and Flow Meter Certificate of Calibration
- Reservoir Selector Valve (To Use Either Aircraft's or Unit's Reservoir)
- Standard #16 Pressure Hoses and #24 Return Hoses, 25 ft. (7.62 m) Long
- Standard 50 ft. (15.2 m) Electrical Input Cable
- Durable Laser Engraved , Aluminum Placards
- Panel Mounted Operational Instructions
- Easy Access Exterior Fluid Sampling Valve to Meet Quality Parameters
- Heavy Duty Stainless Steel Bracket for Hose and Electrical Input Cord Storage
- Reservoir Sight Glass to Ensure Safety
- Extra Capacity, Reservoir Desiccant (Water Absorbing) Breather

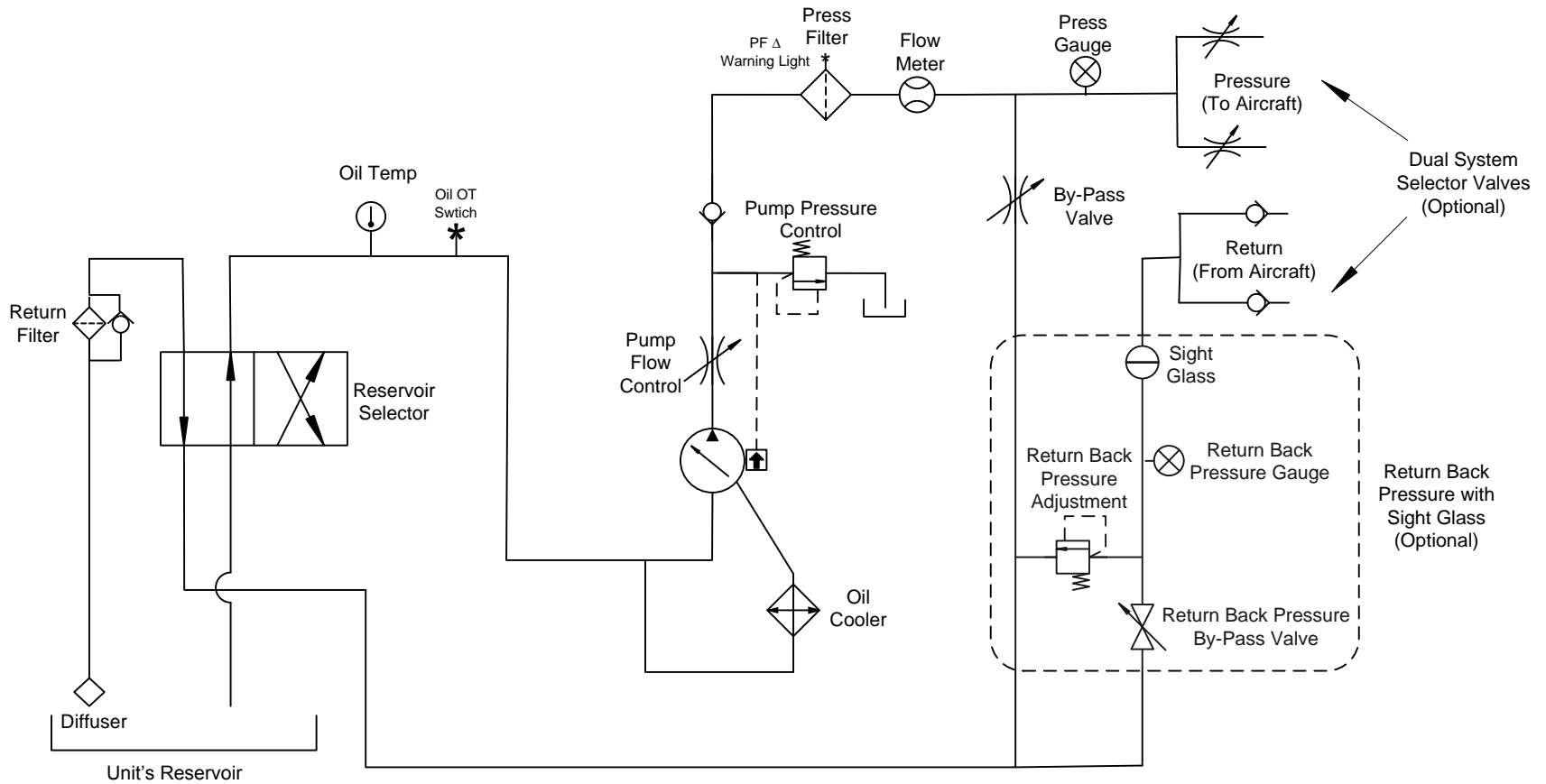
Dimensions: Length 130 in (330 cm), Width 66 in (168 cm), Height 53 in (135 cm)

| SPECIFICATIONS: | | | | | |
|------------------------|------------------------------------|-----------------------|--------------------------------|---------------------------|-----------------------------|
| SERIES MODEL | PUMP PRESSURE PSI (bar) | ENGINE HP (kw) | PUMP FLOW GPM (lpm) | RESERVOIR CAPACITY | WEIGHT Lbs. (kg) |
| 05-752-** | 450 - 4000 PSI 30 - 272 bar | 75 HP 56 kw | 40 GPM 151 lpm | 75 US gal 283 lt | 4500 lbs 2041 kg |
| 05-754-** | 450 - 4000 PSI 30 - 272 bar | 100 HP 75 kw | 50 GPM 189 lpm | 100 US gal 379 lt | 6100 lbs 2766 kg |
| 05-756-** | 450 - 4000 PSI 30 - 272 bar | 125 HP 92 kw | 60 GPM 227 lpm | 170 US gal 643 lt | 7100 lbs 3220 kg |
| 05-758-** | 450 - 5000 PSI 30 - 340 bar | 150 HP 112 kw | 60 GPM 227 lpm | 180 US gal 681 lt | 7700 lbs 3493 kg |

**Model by Fluid Type: Mil-H-5606 = 02 Mil-H-83282 = 03 Skydrol = 05

***All Models Available with 5000 PSI Operating Pressure





Series 750 Hydraulic Power Unit Schematic

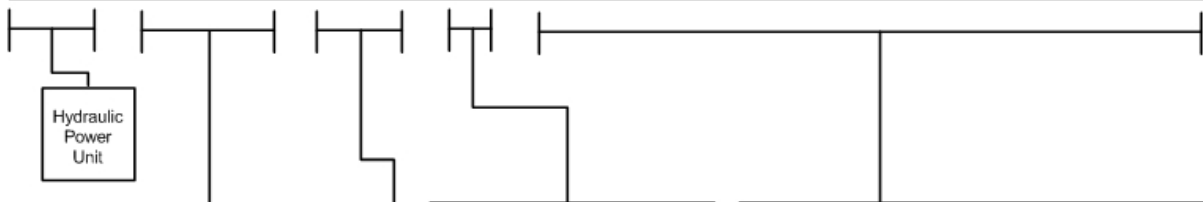
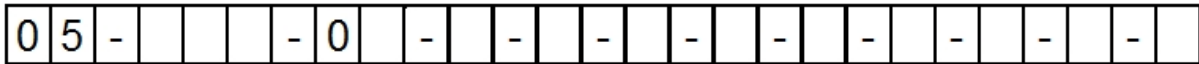
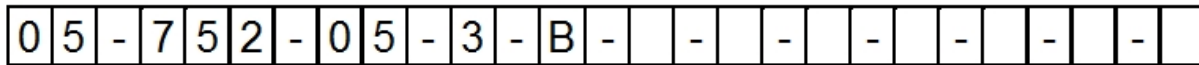
Ordering Instructions

- Step 1: Determine Size of the Hydraulic Power Unit Required, Refer to Aircraft's Maintenance Manual For
 A. Maximum (GPM) Gallons Per Minute B. Maximum (PSI) Pound Per Square Inch
- Step 2: Refer to Aircraft's Maintenance Manual for Type of Hydraulic Fluid.
- Step 3: Determine the input voltage the Hydraulic Power Unit will be operated on. When ordering, the most common error is selecting Incorrect input voltages, 50 Hertz the flow will be reduced by 17%
- Step 4: Call A&P Hydraulics experienced sales staff for any questions for explanation of the complete range of Hydraulic Power Unit Options that we offer.

EXAMPLE:

Hydraulic Power Unit – 55 GPM @ 5000 PSI – Skydrol Fluid – 460 Volt 60 Hertz 3 Phase

Optional: 50 ft. Hoses



| CHAR | GPM | LPM | PSI | BAR | HP | KW |
|------|-----|-----|------|-----|-----|-----|
| 752 | 40 | 151 | 4000 | 272 | 75 | 56 |
| 754 | 50 | 189 | 4000 | 272 | 100 | 75 |
| 756 | 60 | 227 | 4000 | 272 | 125 | 92 |
| 758 | 60 | 227 | 5000 | 340 | 150 | 112 |

| CHAR | VOLT/FREQ/PHASE |
|------|-----------------|
| 0 | 208V60Hz/3ph |
| 1 | 220V60Hz/3ph |
| 2 | 308V60Hz/3ph |
| 3 | 460V60Hz/3ph |
| 4 | 575V60Hz/3ph |
| 5 | 200V50Hz/3ph |
| 6 | 220V50Hz/3ph |
| 7 | 380V50Hz/3ph |
| 8 | 415V50Hz/3ph |
| 9 | 440V50Hz/3ph |

| CHAR | FLUID TYPE |
|------|---------------|
| 2 | Mil-H-5606 |
| 3 | Mil-H-83282 |
| 5 | Skydrol |
| 6 | Mil-PRF-87257 |

| CHAR | OPTION DESCRIPTION |
|------|---|
| B | 50 ft. Hoses |
| C | Dual System |
| G | Voltage Monitor (208-220V) |
| H | Voltage Monitor (308-380V) |
| I | Voltage Monitor (415-460V) |
| J | Voltage Monitor (575V) |
| M | Reservoir Hand Pump |
| T | Return Back Pressure w/ Sight Glass |
| U | Return Sight Glass |
| V | Return Back Pressure |
| Y | Custom Engineering |
| W | Second Language Operation Placards & Owner's Manual |
| X | CE Compliant |
| Z | Digital Gauges |

