

HEAVY DUTY HYDRAULIC POWER UNIT

**720
Series**

Our Extensive Expertise and Friendly Competent Support Staff Ensures Our Hydraulic Test Equipment is the Most Innovative on the Market Today

**2 Year
Warranty**



Model 05-722-05

- **Performance Assured 100% Duty Cycle**
 1. Will deliver Maximum Flow @ Maximum Pressure
 2. Industrial Duty Lincoln® Motor
 3. Heavy Duty Motor Starter with Over Load Protection
- **Panel Mounted Controls for Ease of Operation and Safety**
 1. Complete Pump Flow Adjustment (0-Full GPM)
 2. Complete Pump Pressure Adjustment (250-Full PSI)
 3. By-Pass Dump Valve
- **Durable 0.90 Brushed Aluminum Cabinet Construction**
 1. Large Hinged Rear Access Door Provides Convenient Access and Inspection
 2. Removable Top Panel for Ease of Access to Unit's Components
 3. No Exterior Paint to Fade or Chip with Usage
 4. Guaranteed Not to Rust
- **Super Clean Filtration – Industry Leading Filtration Ensures Quality While Increasing Aircraft Component Life and Decreasing Aircraft Filter Changes**
 1. High Efficiency, Non-Bypass Pressure Filter (3 Micron Absolute)
 2. Large Capacity Return Filter (6 Micron Absolute)
- **Instrumentation**
 1. High Pressure, Dual Scale Flow Meter (4% Accuracy)
 2. Test Quality Pressure Gauge (1% accuracy)
 3. Dual Scale Pyrometer / Oil Temperature Gauge (1% accuracy)
 4. Hour Meter
- **Operational Warning Lights**
 1. Pressure Filter Condition LED Warning Indicator for Clogged Conditions
 2. High Fluid Temperature LED Warning Indicator



9283 Industrial Blvd. Leland, NC 28451 USA
Voice 910.371.1151 Fax 910.371.1152
ap-hydraulics.com

HEAVY DUTY HYDRAULIC POWER UNIT

**720
Series**

*Intelligent Engineering for Today's Aerospace Maintenance Industries -
Our Extensive Expertise and Friendly Competent Support Staff Ensures Our
Hydraulic Test Equipment is the Most Innovative on the Market Today*

Standard Features:

- 100% Duty Cycle, Will Deliver
- Maximum Flow @ Maximum Pressure
- Heavy Duty All Welded Frame with Fork Lift Brackets
- All Welded Aluminum Construction
- Removable Top Panels and Hinged Rear Door for Ease of Access to Unit's Components
- High Efficiency Aluminum Oil Cooler with 3 Phase Electric Fan
- Stainless Steel Reservoir (70 Gallons)
- Reservoir Sight Glass to Ensure Safety
- All Electrical Components Installed in Liquid Proof Enclosures (NEMA 4, 12)
- Safety Assured with Exterior Electrical Panel Access
- Current Pressure Gauge and Flow Meter Certificate of Calibration
- Reservoir Selector Valves (to use either aircraft's or unit's reservoir)
- Standard #12 Pressure Hoses and #24 Return Hoses, 25 ft. (7.62 m) Long
- Standard 50 ft. (15.2 m) Electrical Input Cable
- Durable Aluminum Laser Engraved Placards
- Panel Mounted Operational Instructions
- Guaranteed No Leaks, Aluminum Pan Completely Covers Bottom
- Easy Access Exterior Fluid Sampling Valve to Meet Quality Parameters
- Easy Maneuvering Ensured with 8 in. x 2 in. Castors, Two Fixed and Two Swivel with Stability Provided by the Heavy Duty Floor Lock
- Heavy Duty Stainless Steel Bracket for Hose and Electrical Input Cord Storage

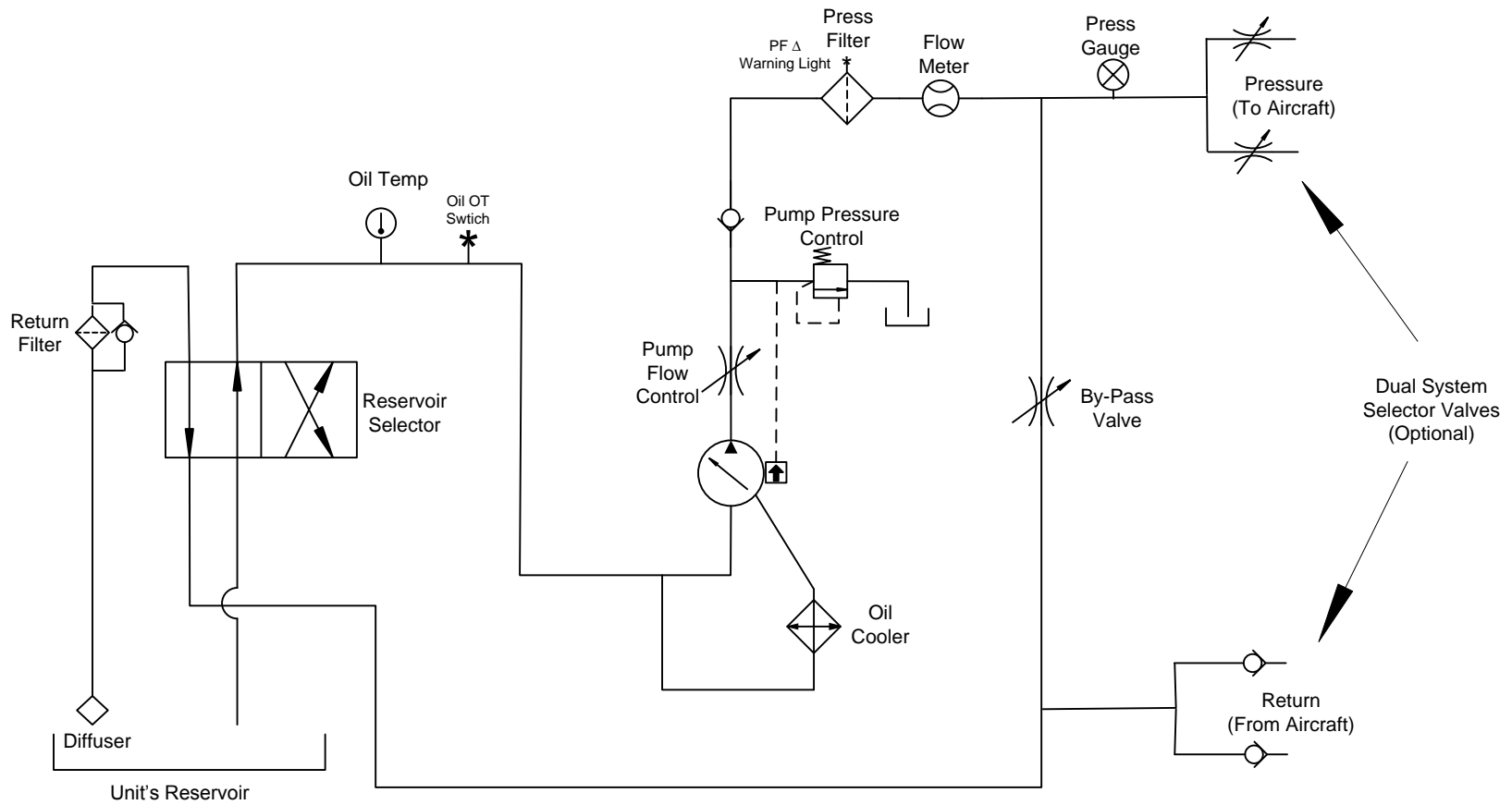
Dimensions: Length 86 in (218 cm), Width 56 in (142 cm), Height 54 in (137 cm)

SPECIFICATIONS:					
SERIES MODEL	PUMP PRESSURE PSI (bar)	MOTOR HP (kw)	PUMP FLOW		WEIGHT Lbs. (kg)
			50 Hz GPM (lpm)	60 Hz GPM (lpm)	
05-720-**	450 - 4000 PSI 30 - 272 bar	50 HP 37 kw	21 GPM 79 lpm	25 GPM 95 lpm	3450 lbs 1565 kg
05-721-**	450 - 5000 PSI 30 - 340 bar	60 HP 45 kw	21 GPM 79 lpm	25 GPM 95 lpm	3600 lbs 1633 kg
05-722-**	450 - 4000 PSI 30 - 272 bar	60 HP 45 kw	28 GPM 125 lpm	35 GPM 133 lpm	3500 lbs 1588 kg
05-723-**	450 - 5000 PSI 30 - 340 bar	75 HP 56 kw	28 GPM 125 lpm	35 GPM 133 lpm	3900 lbs 1769 kg

**Model by Fluid Type: Mil-H-5606 = 02 Mil-H-83282 = 03 Skydrol = 05



9283 Industrial Blvd. Leland, NC 28451 USA
Voice 910.371.1151 Fax 910.371.1152
ap-hydraulics.com



Series 720 Hydraulic Power Unit Schematic

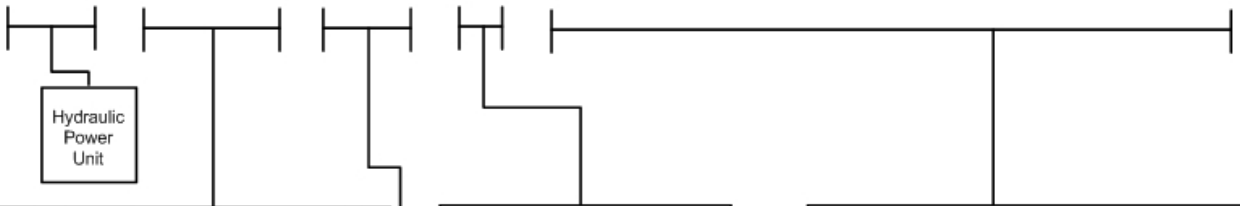
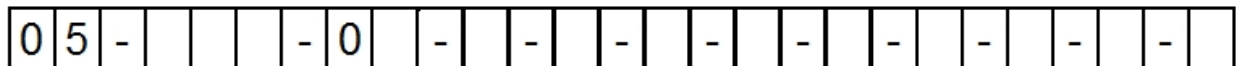
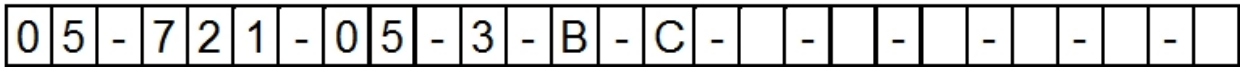
Ordering Instructions

- Step 1: Determine Size of the Hydraulic Power Unit Required, Refer to Aircraft's Maintenance Manual For
 A. Maximum (GPM) Gallons Per Minute B. Maximum (PSI) Pound Per Square Inch
- Step 2: Refer to Aircraft's Maintenance Manual for Type of Hydraulic Fluid.
- Step 3: Determine the input voltage the Hydraulic Power Unit will be operated on. When ordering, the most common error is selecting Incorrect input voltages, 50 Hertz the flow will be reduced by 17%
- Step 4: Call A&P Hydraulics experienced sales staff for any questions for explanation of the complete range of Hydraulic Power Unit Options that we offer.

EXAMPLE:

Hydraulic Power Unit – 25 GPM @ 5000 PSI – Skydrol Fluid – 460 Volt 60 Hertz 3 Phase

Optional: 50 ft. Hoses and Dual System



CHAR	GPM	LPM	PSI	BAR	HP	KW
720	25	95	4000	272	50	37
721	25	95	5000	340	60	45
722	35	133	4000	272	60	45
723	35	133	5000	340	75	56

CHAR	VOLT/FREQ/PHASE
0	208V60Hz/3ph
1	220V60Hz/3ph
2	308V60Hz/3ph
3	460V60Hz/3ph
4	575V60Hz/3ph
5	200V50Hz/3ph
6	220V50Hz/3ph
7	380V50Hz/3ph
8	415V50Hz/3ph
9	440V50Hz/3ph

CHAR	FLUID TYPE
2	Mil-H-5606
3	Mil-H-83282
5	Skydrol
6	Mil-PRF-87257

CHAR	OPTION DESCRIPTION
B	50 ft. Hoses
C	Dual System
D	Dual System w/ X-over Check
G	Voltage Monitor (208-220V)
H	Voltage Monitor (308-380V)
I	Voltage Monitor (415-460V)
J	Voltage Monitor (575V)
L	Reservoir Low Level LED Warning Indicator
M	Reservoir Hand Pump
N	Towing/Trailer Pkg.
Q	Calibration Port
T	Return Back Pressure w/ Sight Glass
U	Return Sight Glass
V	Return Back Pressure
W	Second Language Operation Placards & Owner's Manual
X	CE Compliant
Y	Custom Engineering
Z	Digital Gauges

