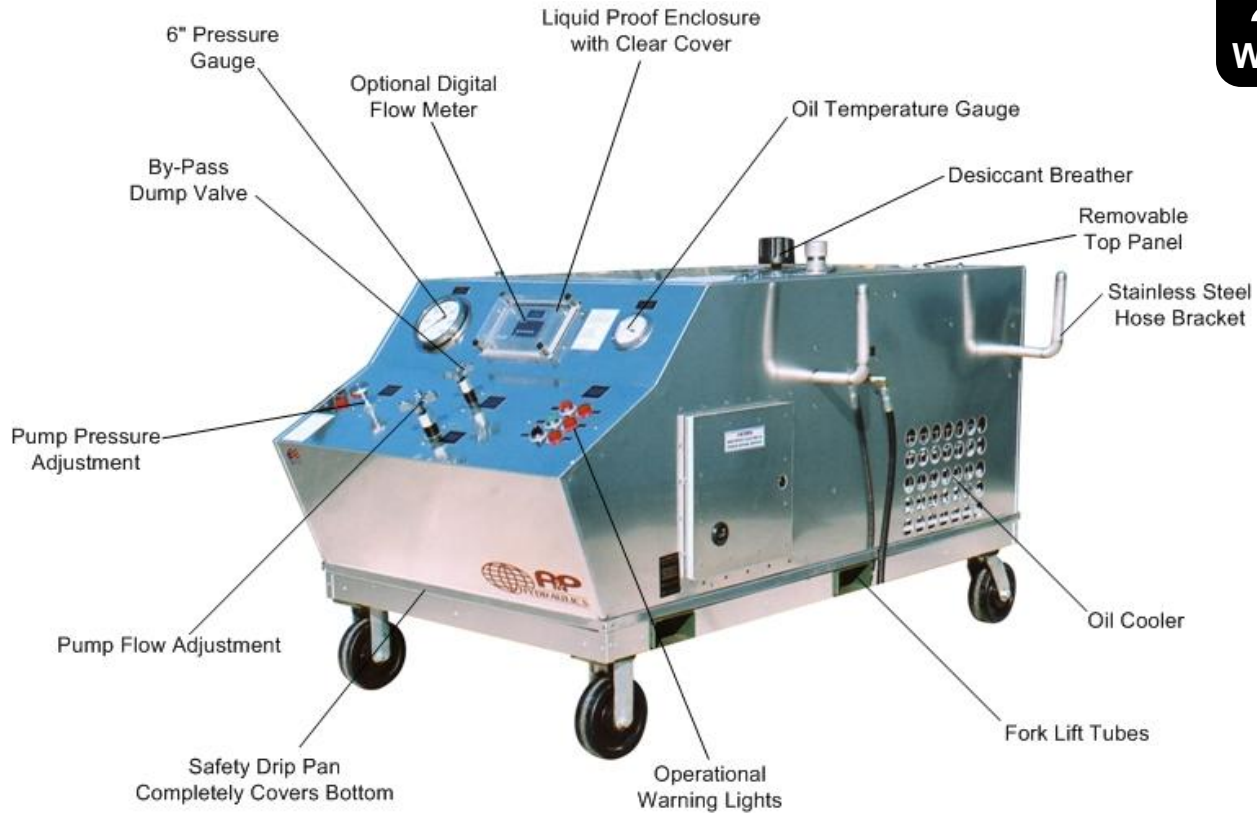


HEAVY DUTY HYDRAULIC POWER UNIT

**710
Series**

Intelligent Engineering for Today's Aerospace Maintenance Industries

**2 Year
Warranty**



Model 05-719-05

Shown with Optional Digital Flow Meter

- **Performance Assured 100% Duty Cycle**
 1. Will deliver Maximum Flow @ Maximum Pressure
 2. Industrial Duty Lincoln® Motor
 3. Heavy Duty Motor Starter with Over Load Protection
- **Panel Mounted Controls for Ease of Operation and Safety**
 1. Complete Pump Flow Adjustment (0-Full GPM)
 2. Complete Pump Pressure Adjustment (250-Full PSI)
 3. By-Pass Dump Valve
- **Super Clean Filtration - Industry Leading Filtration Ensures Quality While Increasing Aircraft Component Life and Decreasing Aircraft Filter Changes**
 1. High Efficiency, Non-Bypass Pressure Filter (3 Micron Absolute)
 2. Large Capacity Return Filter (6 Micron Absolute)
 3. Desiccant (Water Absorbing) Reservoir Air Breather
- **Operational Warning Lights**
 1. Pressure Filter Condition LED Warning Indicator for Clogged Conditions
 2. High Fluid Temperature LED Warning Indicator
- **Instrumentation**
 1. High Pressure Dual Scale Flow Meter (4% accuracy)
 2. Optional Precise Digital Flow Meter (1% accuracy) Available
 3. Test Quality 6" Pressure Gauge (1% accuracy)
 4. Dual Scale Pyrometer / Oil Temperature Gauge
 5. Hour Meter (To Schedule Maintenance)
- **Durable 0.90 Brushed Aluminum Cabinet Construction**
 1. Large Hinged Rear Access Door Provides Convenient Access and Inspection
 2. Removable Top Panels for Ease of Access to Unit's Components
 3. No Exterior Paint to Fade or Chip with Usage
 4. Guaranteed Not to Rust



9283 Industrial Blvd. Leland, NC 28451 USA
Voice 910.371.1151 Fax 910.371.1152
ap-hydraulics.com

HEAVY DUTY HYDRAULIC POWER UNIT

Intelligent Engineering for Today's Aerospace Maintenance Industries

Standard Features:

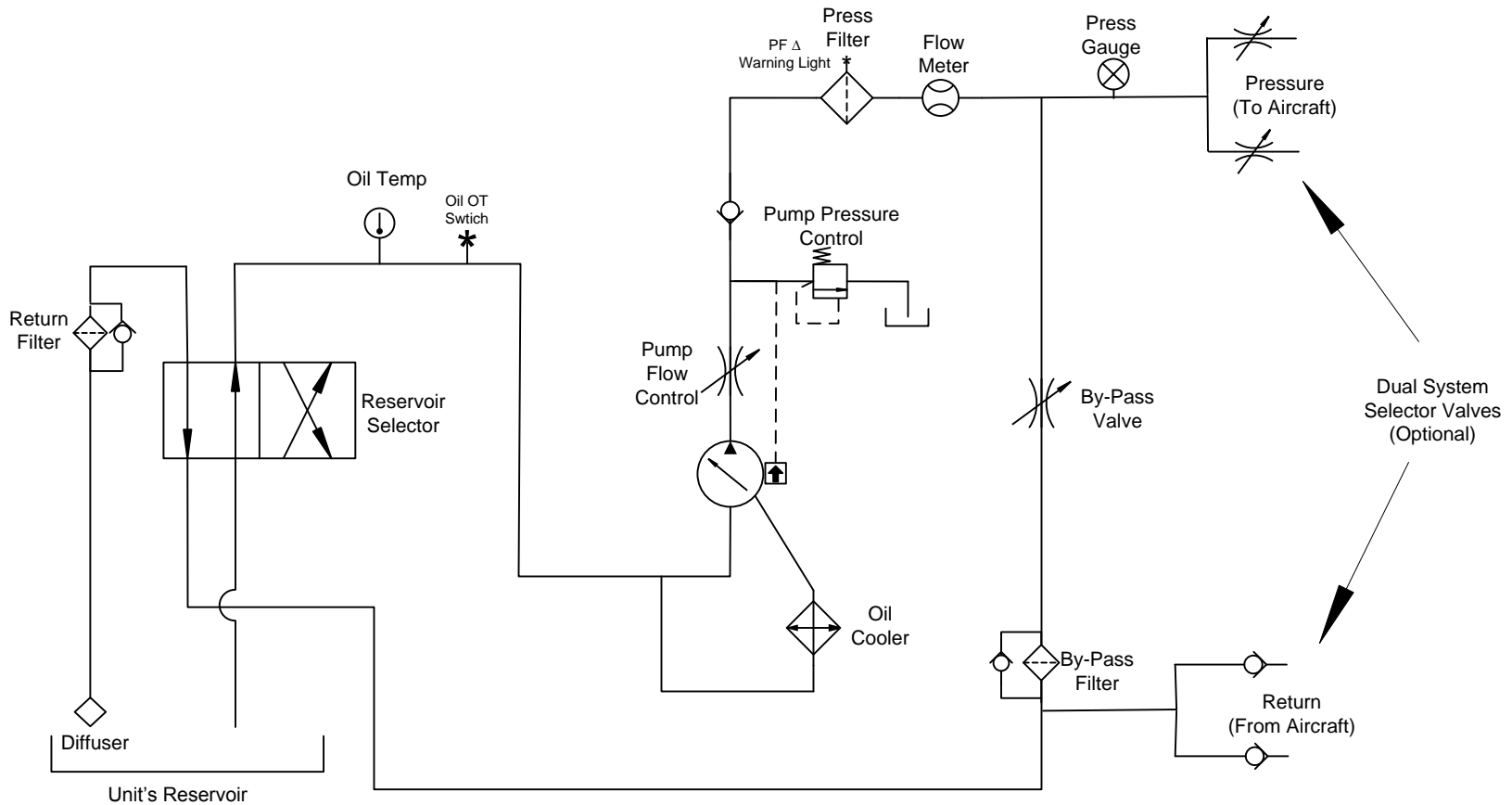
- All Welded .090 Aluminum Construction
- Heavy Duty Welded Frame with Fork Lift Tubes
- Removable Top Panels and Rear Door for Ease of Access to Unit's Components
- All Electrical Components Installed in Liquid Tight Enclosure (NEMA 4, 12)
- Optional Digital Flow Meter Installed in Skydrol Resistant Enclosure
- Guaranteed No Leaks, Aluminum Pan Completely Covers Bottom of Unit
- High Efficiency Aluminum Oil Cooler with 3 Phase Electric Fan
- Stainless Steel Reservoir (40 Gallons)
- Current Pressure Gauge and Flow Meter Certificate of Calibration
- Reservoir Selector Valves (to use either aircraft's or unit's reservoir)
- Standard #8 Pressure Hoses and #16 Return Hoses, 25 ft. (7.62 m) Long
- Standard 50 ft. (15.2 m) Electrical Input Cable
- Durable Aluminum, Laser Engraved Placards
- Panel Mounted Operational Instructions
- Easy Access Exterior Fluid Sampling Valve to Meet Quality Parameters
- Easy Maneuvering Ensured by Two Fixed and Two Swivel Castors with Stability Provided by the Heavy Duty Floor Lock
- Heavy Duty Bracket for Hose and Electrical Input Cord Storage

Dimensions: Length 76 in (193 cm), Width 44 in (112 cm), Height 44 in (112 cm)

SPECIFICATIONS:					
SERIES MODEL	PUMP PRESSURE PSI (bar)	MOTOR HP (kw)	PUMP FLOW		WEIGHT Lbs. (kg)
			50 Hz GPM (lpm)	60 Hz GPM (lpm)	
05-718-**	450 - 4000 PSI 30 - 272 bar	25 HP 19 kw	12 GPM 45 lpm	15 GPM 57 lpm	1425 lbs 646 kg
05-719-**	450 - 4000 PSI 30 - 272 bar	40 HP 30 kw	16.7 GPM 65 lpm	20 GPM 76 lpm	1750 lbs 793 kg

**Model by Fluid Type: Mil-H-5606 = 02 Mil-H-83282 = 03 Skydrol = 05





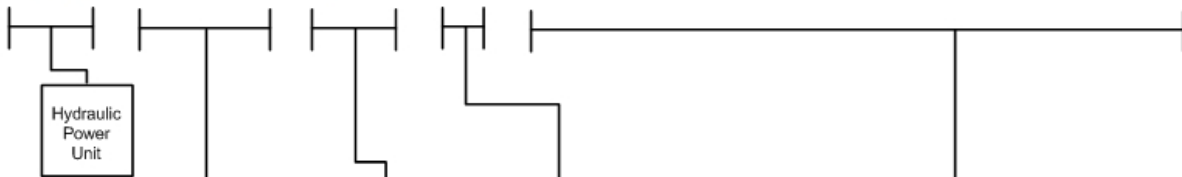
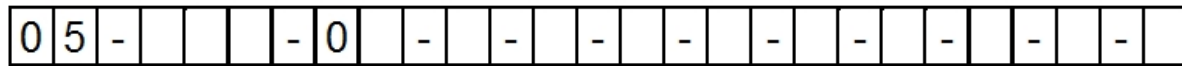
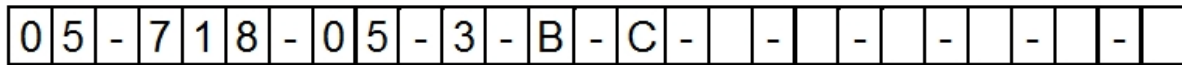
Series 710 Hydraulic Power Unit Schematic

Ordering Instructions

- Step 1: Determine Size of the Hydraulic Power Unit Required, Refer to Aircraft's Maintenance Manual For
 A. Maximum (GPM) Gallons Per Minute B. Maximum (PSI) Pound Per Square Inch
- Step 2: Refer to Aircraft's Maintenance Manual for Type of Hydraulic Fluid.
- Step 3: Determine the input voltage the Hydraulic Power Unit will be operated on. When ordering, the most common error is selecting Incorrect input voltages, 50 Hertz the flow will be reduced by 17%
- Step 4: Call A&P Hydraulics experienced sales staff for any questions for explanation of the complete range of Hydraulic Power Unit Options that we offer.

EXAMPLE:

Hydraulic Power Unit – 15 GPM @ 4000 PSI – Skydrol Fluid – 460 Volt 60 Hertz 3 Phase
 Optional: 50 ft. Hoses and Dual System



CHAR	GPM	LPM	PSI	BAR	HP	KW
718	15	57	4000	272	25	19
719	20	76	4000	272	40	30

CHAR	VOLT/FREQ/PHASE
0	208V60Hz/3ph
1	220V60Hz/3ph
2	308V60Hz/3ph
3	460V60Hz/3ph
4	575V60Hz/3ph
5	200V50Hz/3ph
6	220V50Hz/3ph
7	380V50Hz/3ph
8	415V50Hz/3ph
9	440V50Hz/3ph

CHAR	FLUID TYPE
2	Mil-H-5606
3	Mil-H-83282
5	Skydrol
6	Mil-PRF-87257

CHAR	OPTION DESCRIPTION
B	50 ft. Hoses
C	Dual System
D	Dual System w/ X-over Check
G	Voltage Monitor (208-220V)
H	Voltage Monitor 308-(380V)
I	Voltage Monitor (415-460V)
J	Voltage Monitor (575V)
L	Reservoir Low Level LED Indicator
M	Reservoir Hand Pump
N	Towing/Trailer Pkg.
Q	Calibration Port
T	Return Back Pressure w/ Sight Glass
U	Return Sight Glass
V	Return Back Pressure
W	Second Language Operation Placards & Owner's Manual
X	CE Compliant
Y	Custom Engineering
Z	Digital Gauges

