

FLUID TRANSFER CART

**420
Series**

**2 Year
Warranty**

*Incorporates Selector Valve to Transfer
Hydraulic Fluid from Built-In 6 Gallon Reservoir or Drums*



Model 04-421-05

STANDARD FEATURES:

- Air Over Oil Transfer Pump
- Uses Shop Air (100 PSI - 20 CFM)
- Two Stage Filtration
 - A. Stage 1 Filter (6 Micron Rating)
 - B. Stage 2 Filter (1 Micron Rating)
- Built-in 6 Gallon Stainless Steel Reservoir
- Suction Selector Valve for Using Built-in reservoir or for Transferring Fluid from Drums or Buckets
- 15 ft. Suction Hose (#8)
- 15 ft. Delivery Hose (#8)
- Guaranteed No Leaks
Aluminum Pan Completely Covers Bottom
- Heavy Duty 5" Castors with Locks
- Heavy .090 Aluminum Cabinet

• **Instrumentation**

- Stage 1 Filter Condition Gauge
- Stage 2 Filter Condition Gauge
- Digital Flow Meter - Totalizer

Dimensions: Depth 20" Width 36" Height 44"

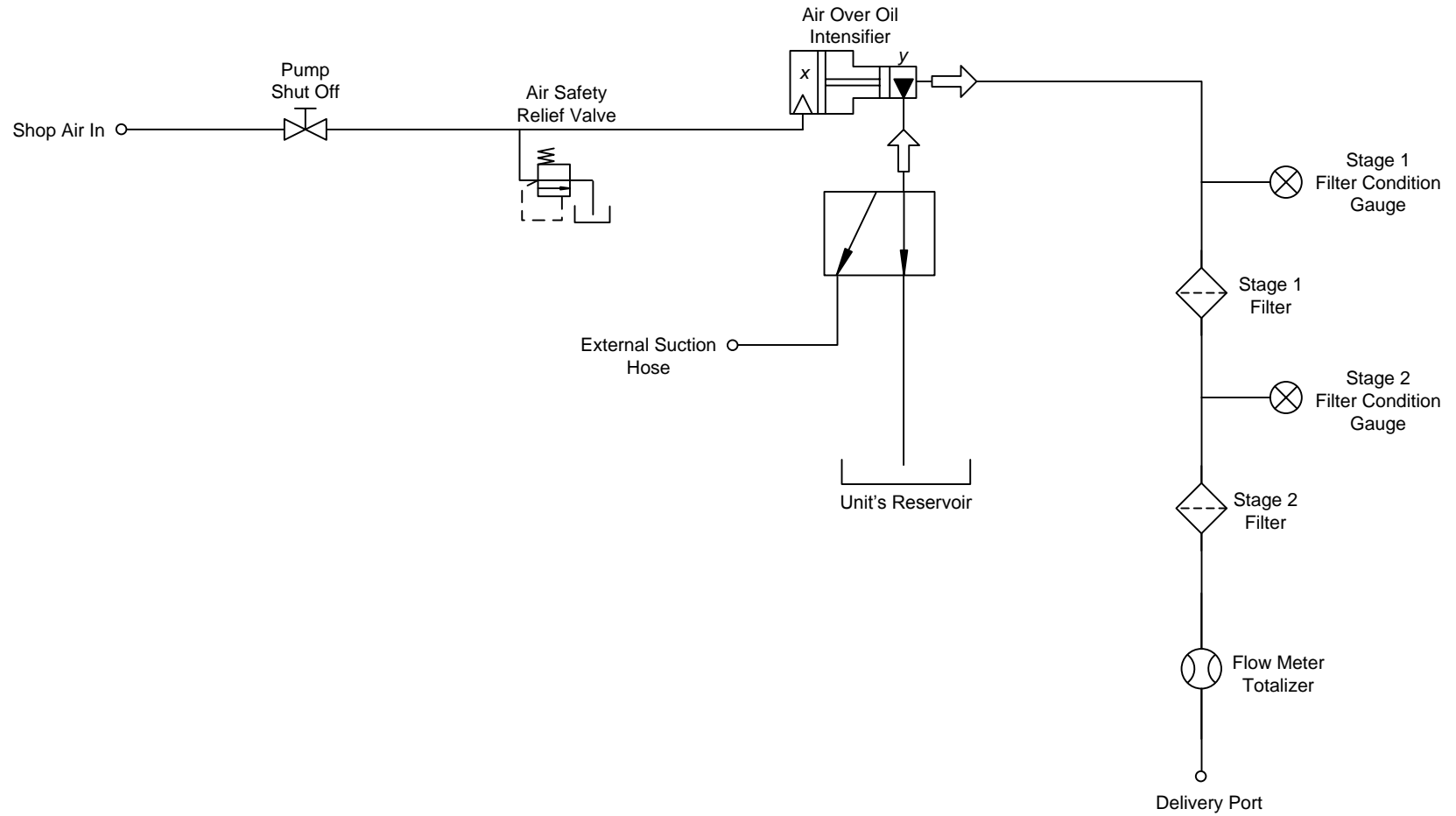
SPECIFICATIONS:

SERIES MODEL	MAXIMUM PRESSURE PSI (bar)	MAXIMUM FLOW		WEIGHT	
		GPM	(lpm)	lb	(kg)
04-421-**	100 PSI 7 bar	5 GPM 19 lpm		250 lb 113 kg	

**Model by Fluid Type: Mil-H-5606 = 02 Mil-H-83282 = 03 Skydrol = 05



9283 Industrial Blvd. Leland, NC 28451 USA
Voice 910.371.1151 Fax 910.371.1152
ap-hydraulics.com



Series 420 Fluid Transfer Cart Schematic

Ordering Instructions

EXAMPLE:

Fluid Transfer Cart – 5 GPM – 100 PSI – Skydrol Fluid

0 4 - 4 2 1 - 0 5

0 4 - - - - 0

